

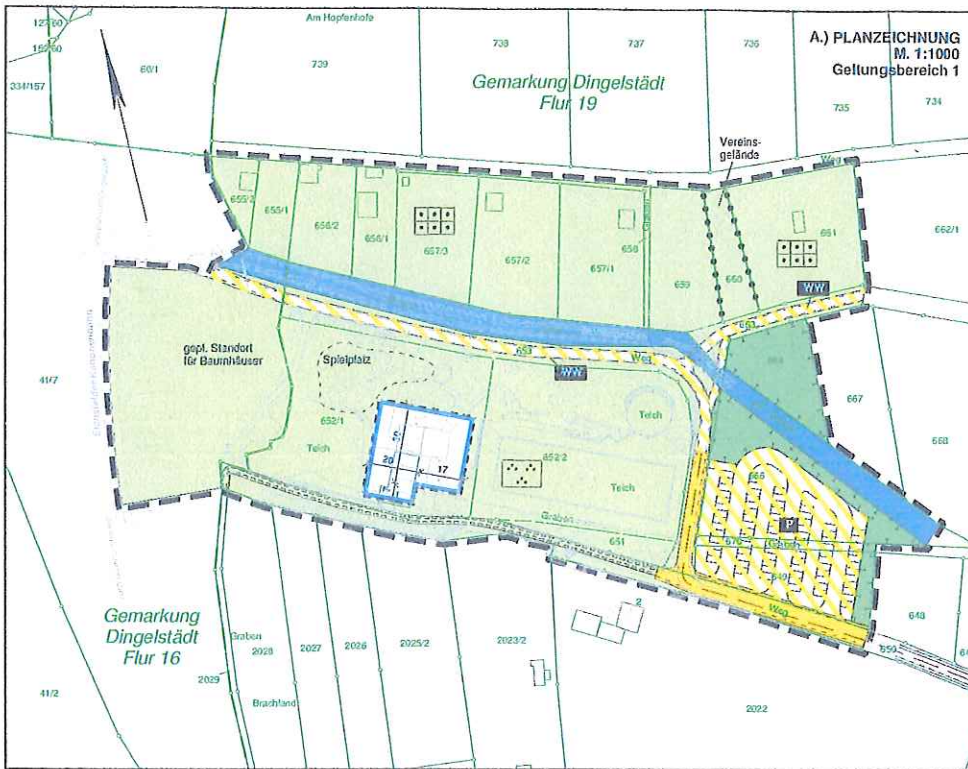
Anlage 1

Lageplan, Messtischblatt, Bebauungsplan Nr. 27 „Rieftpark“,  
Stadt Dingelstedt, Standort und Umfeld, ca. M 1:4964



# Anlage 2

## Bebauungsplan Nr. 27 „Riethpark“, Stadt Dingelstädt, Geltungsbereich und Umfeld, Vorentwurf März 2019, ca. M 1:2960



### VORENTWURF

#### PLANZEICHENERKLÄRUNG

Planzeichner gemäß der Verordnung über die Ausarbeitung der Baupläne und Darstellung des Planinhalts (Planzeichnerverordnung - PlanZV)

#### 1. Festsetzungen

1.1 Maß der baulichen Nutzung  
OK = 4,0 m  
Objekte der baulichen Anlagen

§ 9 Abs.1 Nr.1 BauGB,  
§ 16 BauNVO

#### 1.2 Baugebieten

Baugrenze

§ 9 Abs.1 Nr.2 BauGB  
§ 23 BauNVO

#### 1.3 Verkehrsflächen

Straßenverkehrsfläche

§ 9 Abs.1 Nr.11 BauGB

Straßenbegrenzungslinie

Verkehrsfläche besonderer Zweckbestimmung

Zweckbestimmung: Wirtschaftsweg

Zweckbestimmung: öffentliche Parkfläche

#### 1.4 Grünflächen

Öffentliche Grünfläche

§ 9 Abs.1 Nr.15 BauGB

Zweckbestimmung: Parkanlage

Zweckbestimmung: Kleingartenanlage

#### 1.5 Wasserflächen

Wasserflächen

§ 9 Abs.1 Nr.16 und Abs.5 BauGB

#### 1.6 Sonstige Planzeichen

Mit Geh-, Fahr- und Leitungsrechten zu belastende Fläche

Grenze des räumlichen Geltungsbereichs des Bebauungsplans Nr.27

#### § 9 Abs.7 BauGB

#### 2. Hinweise zur Planzeichnung

Flurgrenze

Flurückgrenze mit abgemerkten Grenzpunkten

Flurückgrenze mit nicht abgemerkten Grenzpunkten

Flurnummer

Flurücknummer

Gebäudebestand, gemessen

Höhenlinie (m ü. DHN/NN)

Planungsgemeinschaft

**INGENIEURBERATUNG W. GRIES**  
ARCHITECTUR - BÜRO - PLANUNG - BAULEITUNG

**planungsbüro bolli**  
architektur + städtebau

37024 Hildesheim, Rammelsbergstraße 1  
Telefon (05131) 65229-99, Fax (05131) 65229-99  
E-Mail: gries@ingenieurberatung-wgries.de

0151 2073015  
0151 2073016  
0151 2073017

Gezeichnet	Datum	Zeichner	geprüft
gezeichnet	März 2019	STR	
gezeichnet	März 2019	bolli	

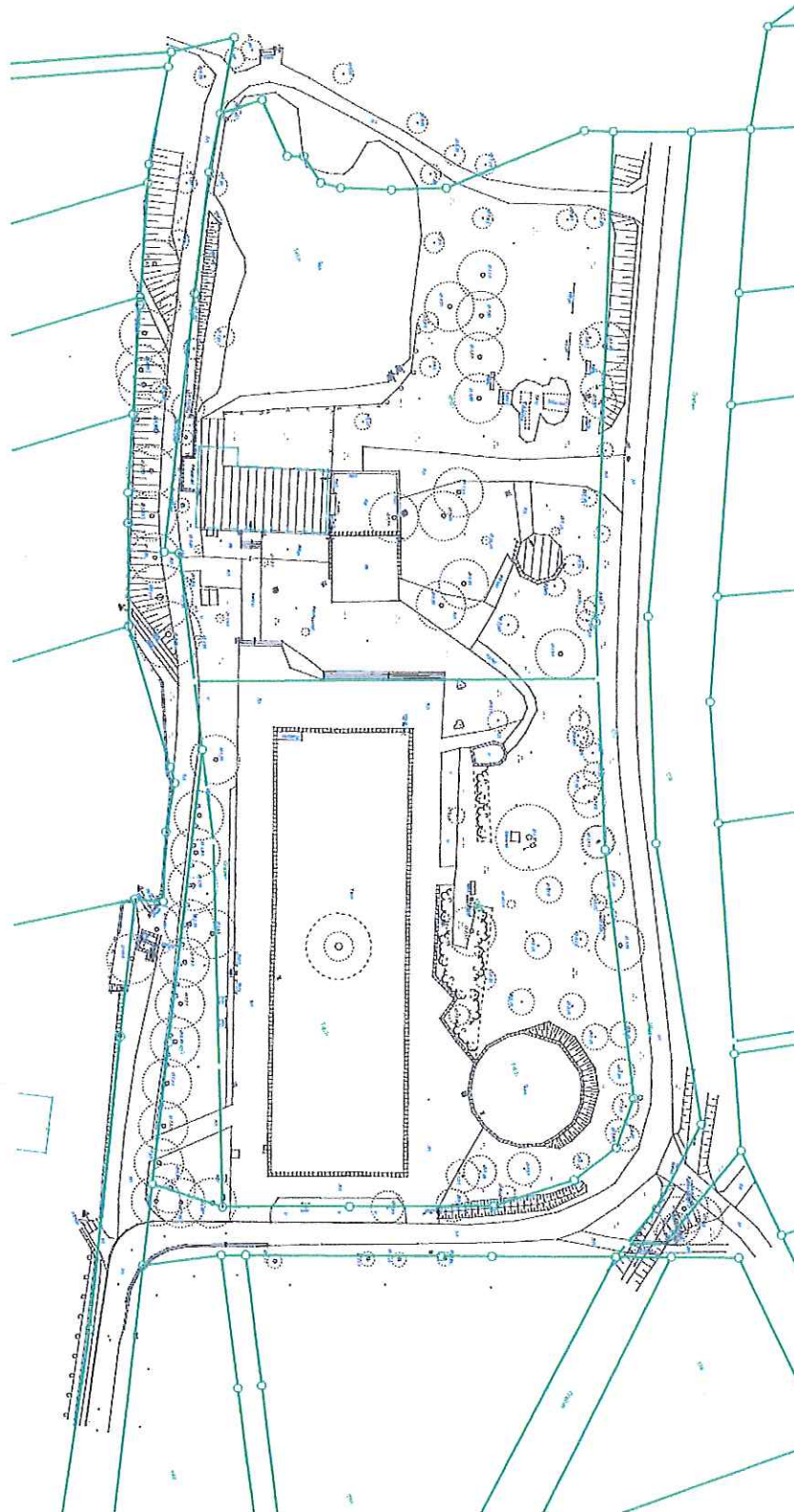
**STADT DINGELSTÄDT**

**BEBAUUNGSPLAN NR. 27**

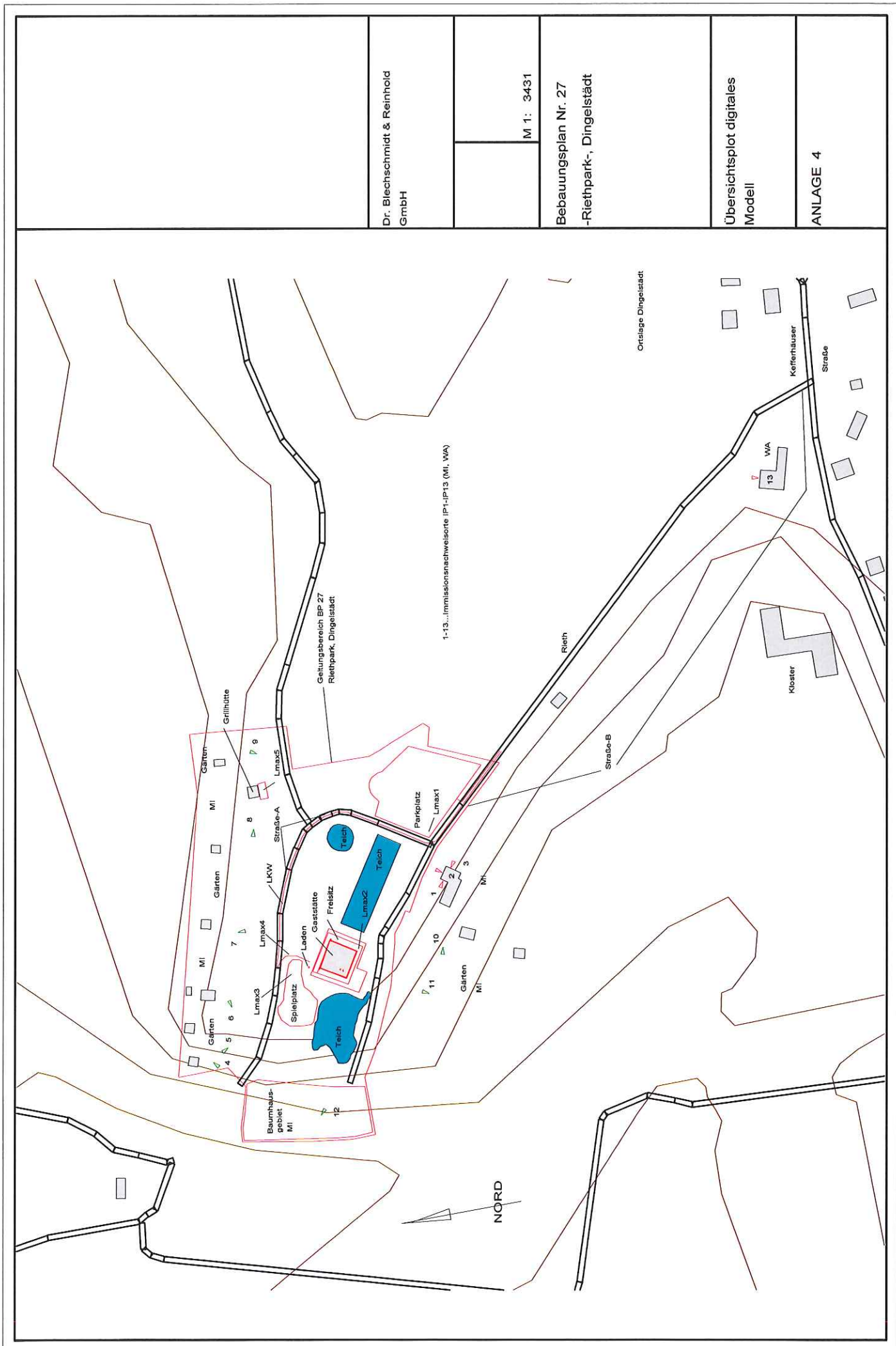
**"RIETHPARK"**



Lageplan des Parks, maßstabslos verkleinert







Dr. Bleichschmidt & Reinhold GmbH

M 1: 3431

Bebauungsplan Nr. 27  
-Riethpark-, Dingselding

Übersichtsplot digitales  
Modell

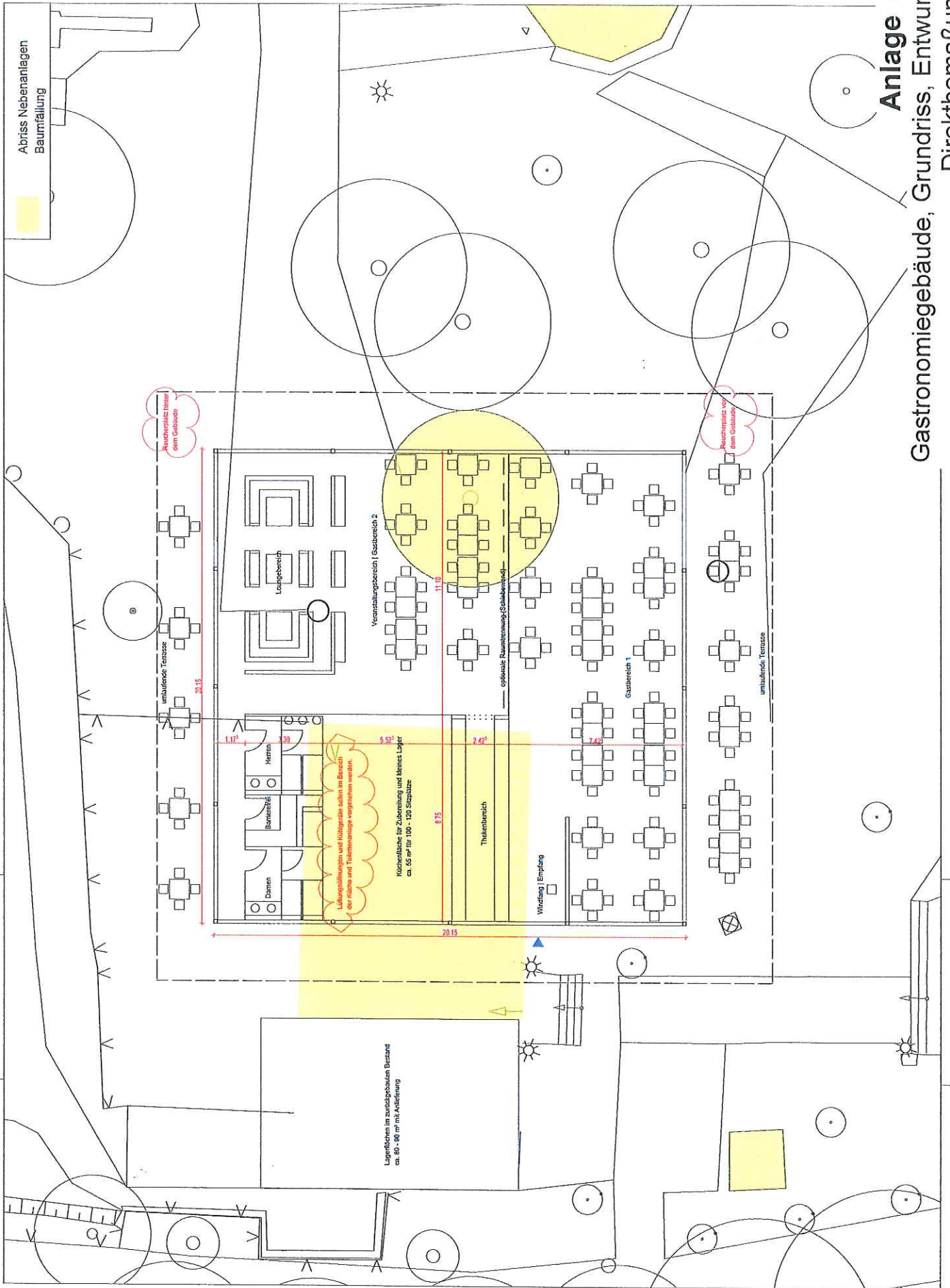
ANLAGE 4

1-13...Immissionsnachweiser (P1-IP13 (MI, WA))

Ortslage Dingselding

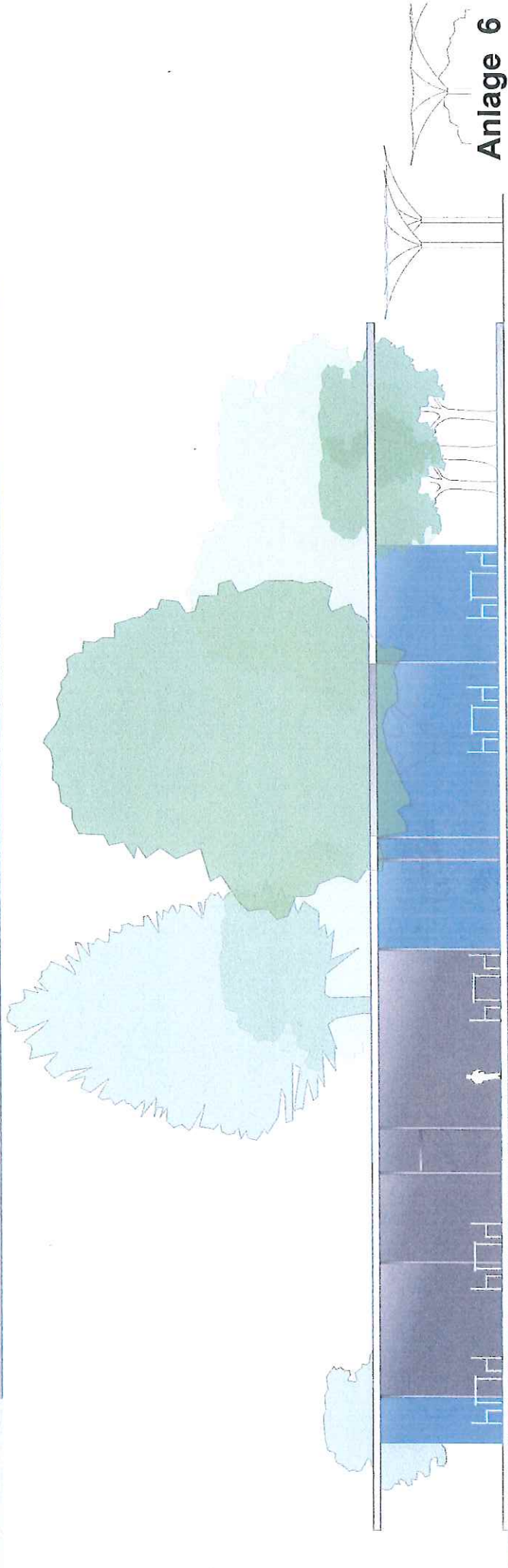
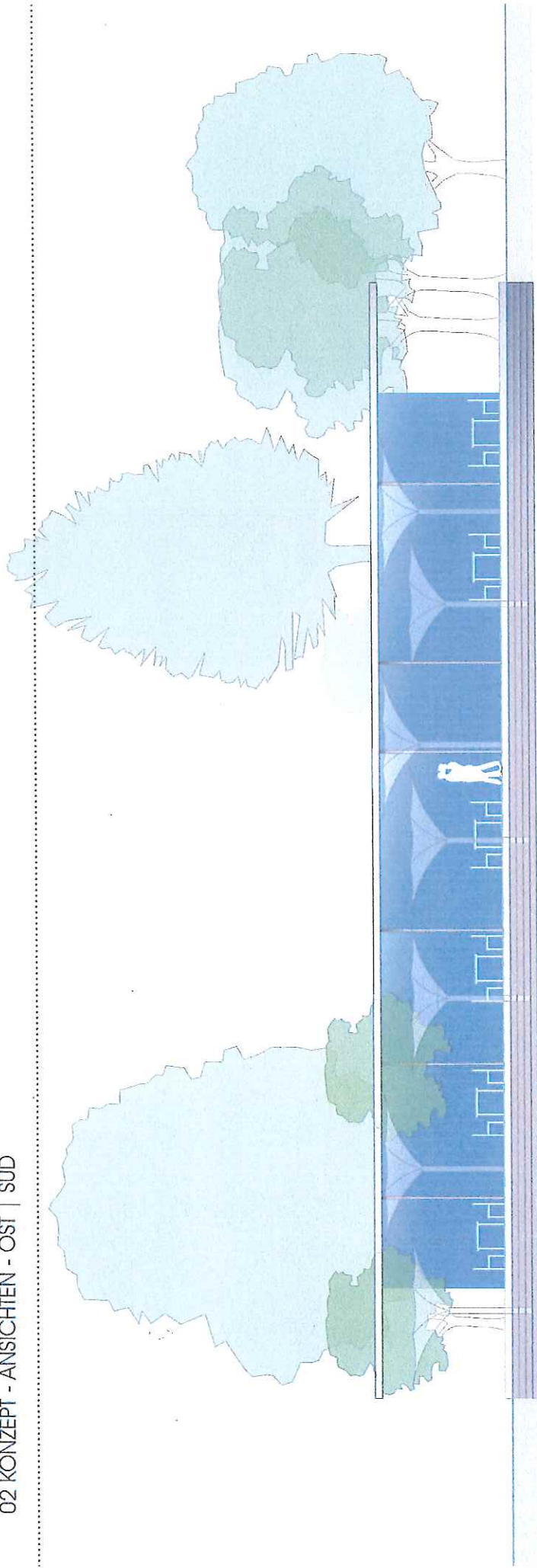
NORD

Abriss Nebenanlagen  
Baumfällung



# Anlage 5

## Gastronomiegebäude, Grundriss, Entwurf, Direktbemessung



Anlage 6  
Gastronomiegebäude, Ansichten, Entwurf



# Anlage 7

## Schallausbreitung aus dem Gebäude (Schalleistungspegel Fassaden/Dach), Familienfeier mit Musikdarbietung, tags/nachts

Nr.	Emissionsquelle	Emission dB(A)	Abst. m	+ dB	S m <sup>2</sup>	R' w+4 dB	Ew. -T h	Ko dB	Frequ. Hz
-----									
Schallausbreitung aus Gebäuden Gastronomiegebäude Rietpark, BP27 Dingelstädt Tür gilt für Schiebe- oder Flügel tür VSG									
1	Ostfassade VSG fest	91.0	0.0	0.0	48.0	39.0	1.00	0.0	500.0
2	Türen VSG zu	91.0	0.0	0.0	29.0	36.0	1.00	0.0	500.0
3	1 Tür VSG nachts auf	91.0	0.0	0.0	3.0	4.0	1.00	0.0	500.0
Südfassade									
4	VSG fest	91.0	0.0	0.0	56.0	39.0	1.00	0.0	500.0
5	1 Tür VSG	91.0	0.0	0.0	8.0	36.0	1.00	0.0	500.0
6	massiv	91.0	0.0	0.0	16.0	43.0	1.00	0.0	500.0
Westfassade									
7	VSG fest	91.0	0.0	0.0	56.0	39.0	1.00	0.0	500.0
8	1 Tür VSG	91.0	0.0	0.0	8.0	36.0	1.00	0.0	500.0
9	massiv	91.0	0.0	0.0	16.0	43.0	1.00	0.0	500.0
Nordfassade									
10	VSG fest	91.0	0.0	0.0	48.0	39.0	1.00	0.0	500.0
11	40% Tür(en) VSG	91.0	0.0	0.0	32.0	36.0	1.00	0.0	500.0
Dach/Decke									
12	Sandwich Var. I	91.0	0.0	0.0	400.0	27.0	1.00	0.0	500.0





1.03	0.92	1.03	0.92	ER	1.02711	0.92287	0.000	0.000	1.000	0.000	0.000	0.000	5.000					
indlEGE	IND J N	1	1	1904091439	11.2.1701101017	1904091439	indl_EGE.17	Rietpark										
Y	X	IP1	IP2	IP3	IP4	IP5	IP6	IP7	IP8	IP9	IP10	IP11	IP12					
0.9229	1.0271	52.93	48.78	354.97	IP1 P1	-	GEB.: IP1	<ID>	ENV: -0.910	0.414	DG: 1.000	DZ: 1.000	DZ: 1.000	<ER>	0.000	<ER>	5.000	
0.9235	1.0331	50.74	47.79	354.93	IP2 P2	-	GEB.: IP2	<ID>	ENV: 0.414	0.910	DG: 1.000	DZ: 1.000	DZ: 1.000	<ER>	0.000	<ER>	5.000	
0.9174	1.0363	41.21	43.15	354.97	IP3 P3	-	GEB.: IP3	<ID>	ENV: 0.910	-0.414	DG: 1.000	DZ: 1.000	DZ: 1.000	<ER>	0.000	<ER>	5.000	
1.0657	0.9003	43.40	39.79	359.50	IP4 P4	-	GEB.: IP4	<ID>	ENV: -0.169	-0.986	DG: 1.000	DZ: 1.000	DZ: 1.000	<ER>	0.000	<ER>	1.500	
1.0752	0.9105	44.82	40.42	355.06	IP5 P5	-	GEB.: IP5	<ID>	ENV: 0.358	0.934	DG: 1.000	DZ: 1.000	DZ: 1.000	<ER>	0.000	<ER>	1.500	
1.0726	0.9388	46.10	41.97	351.47	IP6 P6	-	GEB.: IP6	<ID>	ENV: -0.085	-0.996	DG: 1.000	DZ: 1.000	DZ: 1.000	<ER>	0.000	<ER>	1.500	
1.0683	0.9916	45.59	43.21	351.46	IP7 P7	-	GEB.: IP7	<ID>	ENV: 0.358	0.934	DG: 1.000	DZ: 1.000	DZ: 1.000	<ER>	0.000	<ER>	1.500	
1.0574	1.0635	48.17	46.92	351.43	IP8 P8	-	GEB.: IP8	<ID>	ENV: 0.358	0.934	DG: 1.000	DZ: 1.000	DZ: 1.000	<ER>	0.000	<ER>	1.500	
1.0552	1.1166	45.25	46.47	351.43	IP9 P9	-	GEB.: IP9	<ID>	ENV: -0.076	0.997	DG: 1.000	DZ: 1.000	DZ: 1.000	<ER>	0.000	<ER>	1.500	
0.9228	0.9809	52.23	48.20	356.84	IP10 P10	-	GEB.: IP10	<ID>	ENV: -0.910	0.414	DG: 1.000	DZ: 1.000	DZ: 1.000	<ER>	0.000	<ER>	1.500	
0.9327	0.9482	45.28	44.80	357.98	IP11 P11	-	GEB.: IP11	<ID>	ENV: -0.910	0.414	DG: 1.000	DZ: 1.000	DZ: 1.000	<ER>	0.000	<ER>	1.500	
1.0092	0.8630	51.78	41.05	372.14	IP12 P12	-	GEB.: IP12	<ID>	ENV: -0.938	0.348	DG: 1.000	DZ: 1.000	DZ: 1.000	<ER>	0.000	<ER>	2.500	

**Anlage 8**

Beurteilungspegel Anlagenlärm, Gesamtbelastung, Familienfeier mit Musikdarbietung, alle Türen in Ostfassade tags offen, 1 Tür in Ostfassade nachts offen, tags/nachts





1.03	0.92	1.03	0.92	ER	1.02711	0.92287	0.000	0.000	1.000	0.000	0.000	5.000					
maxZBGE	IND J N	1	1	1904091131	11.2_1701101017	1904091131	max1_EGE.17	Rietpark	0.000	1.000	0.000	5.000					
Y	X	IPF	IPN	Z	IP1 P1	- GEB.: IP1			ENV:	0.414	0.910	DG:					
0.9229	1.0271	38.21	38.21	354.97	IP1 P1	- GEB.: IP1			ENV:	0.414	0.910	DG:	1.000	DZ:	0.000	<HR>	5.000
0.9235	1.0331	59.69	59.69	354.93	IP2 P2	- GEB.: IP2			ENV:	0.414	0.910	DG:	1.000	DZ:	0.000	<HR>	5.000
0.9174	1.0363	59.80	59.80	354.97	IP3 P3	- GEB.: IP3			ENV:	0.910	-0.414	DG:	1.000	DZ:	0.000	<HR>	5.000
1.0857	0.9003	39.09	39.09	359.50	IP4 P4	- GEB.: IP4			ENV:	0.358	0.934	DG:	1.000	DZ:	0.000	<HR>	1.500
1.0752	0.9105	39.45	39.45	355.06	IP5 P5	- GEB.: IP5			ENV:	0.358	0.934	DG:	1.000	DZ:	0.000	<HR>	1.500
1.0726	0.9388	40.19	40.19	351.47	IP6 P6	- GEB.: IP6			ENV:	0.414	0.910	DG:	1.000	DZ:	0.000	<HR>	1.500
1.0683	0.9916	42.12	42.12	351.46	IP7 P7	- GEB.: IP7			ENV:	0.414	0.910	DG:	1.000	DZ:	0.000	<HR>	1.500
1.0574	1.0635	44.20	44.20	351.43	IP8 P8	- GEB.: IP8			ENV:	0.358	0.934	DG:	1.000	DZ:	0.000	<HR>	1.500
1.0552	1.1166	43.60	43.60	351.43	IP9 P9	- GEB.: IP9			ENV:	-0.076	0.997	DG:	1.000	DZ:	0.000	<HR>	1.500
0.9228	0.9809	48.26	48.26	356.84	IP10 P10	- GEB.: IP10			ENV:	0.243	0.970	DG:	1.000	DZ:	0.000	<HR>	1.500
0.9327	0.9482	45.00	45.00	357.98	IP11 P11	- GEB.: IP11			ENV:	0.358	0.934	DG:	1.000	DZ:	0.000	<HR>	1.500
1.0092	0.8630	40.07	40.07	372.14	IP12 P12	- GEB.: IP12			ENV:	-0.364	-0.931	DG:	1.000	DZ:	0.000	<HR>	2.500

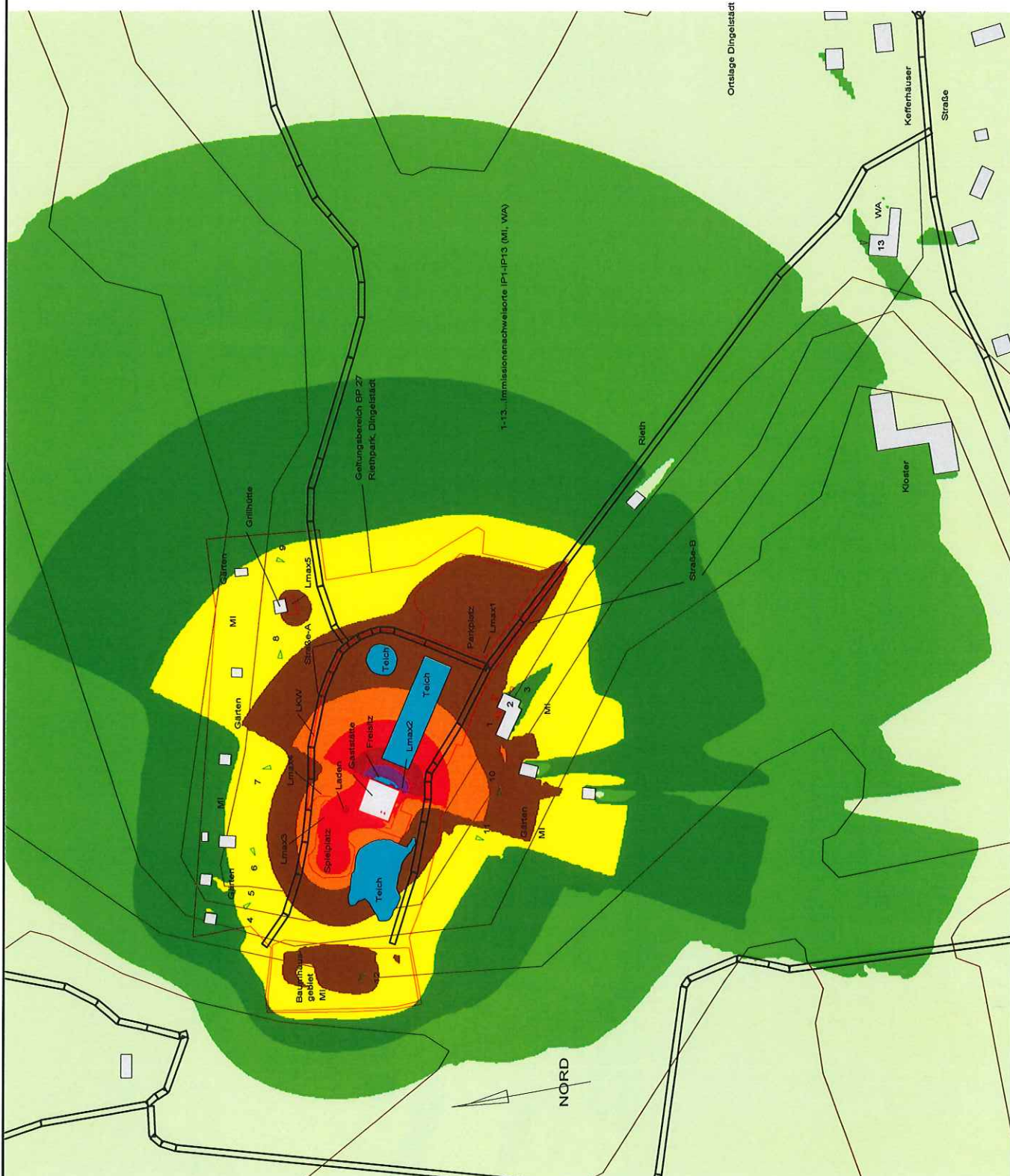
  

1.03	0.92	1.03	0.92	ER	1.02711	0.92287	0.000	0.000	1.000	0.000	0.000	5.000					
maxZBGE	IND J N	1	1	1904091135	11.2_1701101017	1904091135	max2_EGE.17	Rietpark	0.000	1.000	0.000	5.000					
Y	X	IPF	IPN	Z	IP1 P1	- GEB.: IP1			ENV:	0.414	0.910 <th>DG:</th>	DG:					
0.9229	1.0271	48.43	48.43	354.97	IP1 P1	- GEB.: IP1			ENV:	-0.910	0.414	DG:	1.000	DZ:	0.000	<HR>	5.000
0.9235	1.0331	45.65	45.65	354.93	IP2 P2	- GEB.: IP2			ENV:	0.414	0.910	DG:	1.000	DZ:	0.000	<HR>	5.000
0.9174	1.0363	25.29	25.29	354.97	IP3 P3	- GEB.: IP3			ENV:	0.910	-0.414	DG:	1.000	DZ:	0.000	<HR>	5.000
1.0857	0.9003	27.36	27.36	359.50	IP4 P4	- GEB.: IP4			ENV:	0.358	0.934	DG:	1.000	DZ:	0.000	<HR>	1.500
1.0752	0.9105	28.14	28.14	355.06	IP5 P5	- GEB.: IP5			ENV:	-0.085	-0.996	DG:	1.000	DZ:	0.000	<HR>	1.500
1.0726	0.9388	25.13	25.13	351.47	IP6 P6	- GEB.: IP6			ENV:	-0.028	-1.000	DG:	1.000	DZ:	0.000	<HR>	1.500
1.0683	0.9916	30.56	30.56	351.46	IP7 P7	- GEB.: IP7			ENV:	0.358	0.934	DG:	1.000	DZ:	0.000	<HR>	1.500
1.0574	1.0635	40.75	40.75	351.43	IP8 P8	- GEB.: IP8			ENV:	0.929	-0.371	DG:	1.000	DZ:	0.000	<HR>	1.500
1.0552	1.1166	40.10	40.10	351.43	IP9 P9	- GEB.: IP9			ENV:	0.929	-0.371	DG:	1.000	DZ:	0.000	<HR>	1.500
0.9228	0.9809	48.30	48.30	356.84	IP10 P10	- GEB.: IP10			ENV:	-0.910	0.414	DG:	1.000	DZ:	0.000	<HR>	1.500
0.9327	0.9482	48.24	48.24	357.98	IP11 P11	- GEB.: IP11			ENV:	0.358	0.934	DG:	1.000	DZ:	0.000	<HR>	1.500
1.0092	0.8630	41.73	41.73	372.14	IP12 P12	- GEB.: IP12			ENV:	-0.364	-0.931	DG:	1.000	DZ:	0.000	<HR>	2.500









Flächen gleicher Klassen des Beurteilungspegels

- ≤ 35 dB(A)
- ≤ 40 dB(A)
- ≤ 45 dB(A)
- ≤ 50 dB(A)
- ≤ 55 dB(A)
- ≤ 60 dB(A)
- ≤ 65 dB(A)
- ≤ 70 dB(A)
- ≤ 75 dB(A)
- ≤ 80 dB(A)
- > 80 dB(A)

Dr. Bleichschmidt & Reinhold GmbH

M 1: 3431

Bebauungsplan Nr. 27  
-Riethpark-, Dingelstädt

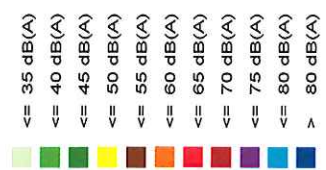
Rechenhöhe: 5.0 m  
Rastermaß: 2.5 m

Beurteilungspegel Anlagenlärm  
alle Quellen, Fam.-Feier, Ostfassade Gaststätte alle Türen offen, tags

ANLAGE 11



Flächen gleicher Klassen  
des Beurteilungspegels



Dr. Blechschmidt & Reinhold  
GmbH

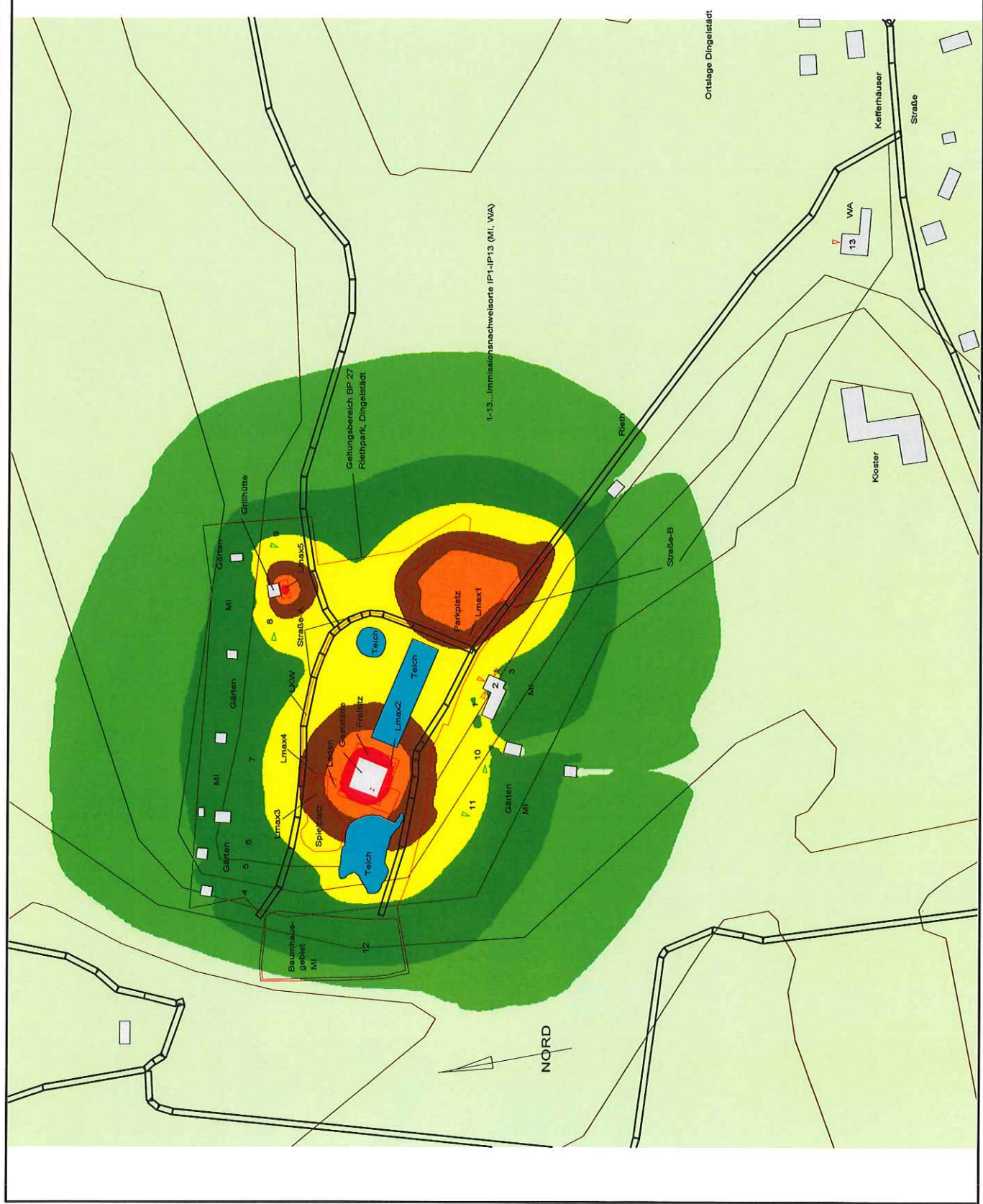
M 1: 3431

Bebauungsplan Nr. 27  
-Riethpark-, Dingelstädt

Rechenhöhe: 5.0 m  
Rastermaß: 2.5 m

Beurteilungspegel Anlagenlärm  
alle Quellen, Fam.-Feier, alle  
Türen der Gaststätte ge-  
schlossen, nachts

ANLAGE 12



Berechnung nach ISO 9613, Langzeit-Mittelung



Aufpunktbezeichnung : IPI Pl - GEB.: IPI  
 Lage des Aufpunktes : Xi= 1.0271 km Yi= 0.9229 km Zi= 354.97 m  
 Tag Nacht  
 Immission : 52.9 dB(A) 48.8 dB(A)

Emitter Name	Emission		RQ	Anz./L/El	Lwysg	Korr. Formel	min. ds	Dc	Dl	mittlere Werte für		L A <sub>T</sub>		Zeitschläge		Im (L A <sub>WEZ</sub> HR)				
	Tag	Nacht								Dreif.	Aktiv	Aktiv	Aggr	Tag	Nacht		Tag	Nacht	Tag	Nacht
	dB(A)	dB(A)		/ m / qm	dB(A)	dB(A)	m	dB	dB	dB	dB	dB(A)	dB(A)	dB	dB	dB(A)	dB(A)			
9	70.0	70.0	Iw	1.0	70.0	0.0	94.6	3.0	0.0	-0.4	-0.4	2.4	-50.5	-3.6	-0.2	-0.5	20.2	20.2	20.2	20.2
2	47.0	0.0	Iw"	3405.8	82.3	0.0	164.5	3.0	0.0	-0.6	0.0	0.0	-56.6	-3.1	-0.4	-0.7	23.9	0.0	0.0	23.9
14	59.0	64.0	Iw"	399.9	85.0	0.0	87.1	3.0	0.0	-0.4	-0.4	2.4	-50.4	-3.6	-0.2	-0.9	34.9	39.9	0.0	34.9
6	56.0	0.0	Iw"	305.3	80.8	0.0	28.8	3.0	0.0	-0.4	0.0	1.8	-46.1	-3.3	-0.2	-8.8	26.8	0.0	0.0	26.8
4	63.0	64.0	Iw"	320.1	88.1	0.0	78.8	3.0	0.0	-0.3	-0.3	3.6	-50.3	-3.3	-0.2	-2.0	38.6	39.6	0.0	38.6
19	58.0	65.0	Iw"	63.0	76.0	83.0	141.3	3.0	0.0	-0.5	-0.5	2.7	-54.2	-3.9	-0.3	0.0	22.8	29.8	0.0	22.8
16	70.0	70.0	Iw	1.0	70.0	0.0	95.7	3.0	0.0	-0.4	-0.4	2.4	-50.6	-3.6	-0.2	-0.8	19.8	19.8	0.0	19.8
5	86.0	0.0	Iw	1.0	86.0	0.0	112.6	3.0	0.0	-0.5	0.0	2.3	-52.0	-3.8	-0.2	-8.5	26.3	0.0	0.0	26.3
13	48.5	53.5	Iw"	79.9	67.5	72.5	98.2	6.0	0.0	-0.3	-0.3	2.4	-50.8	-3.4	-0.2	-15.7	5.5	10.5	0.0	5.5
10	78.1	72.8	Iw"	80.8	97.2	91.9	83.8	6.0	0.0	-0.2	-0.2	2.3	-49.5	-3.1	-0.1	-0.1	52.6	47.3	0.0	52.6
1	49.3	53.5	Iw"	3038.0	84.1	88.3	43.1	3.0	0.0	-0.2	-0.2	0.0	-47.1	-2.9	-0.1	-18.0	18.8	23.0	0.0	18.8
17	70.0	76.0	Iw	1.0	70.0	76.0	107.3	3.0	0.0	-0.4	-0.4	2.4	-51.6	-3.6	-0.2	-14.8	4.8	10.8	0.0	4.8
18	70.0	76.0	Iw	1.0	70.0	76.0	89.5	3.0	0.0	-0.3	-0.3	3.9	-50.0	-3.3	-0.1	0.0	23.2	29.2	0.0	23.2
3	60.0	0.0	Iw"	819.3	89.1	0.0	120.4	3.0	0.0	-0.5	0.0	2.0	-53.4	-3.8	-0.3	-3.4	32.7	0.0	0.0	32.7
11	46.9	51.9	Iw"	79.9	65.9	70.9	87.5	6.0	0.0	-0.2	-0.2	2.4	-49.8	-3.2	-0.2	0.0	20.9	25.9	0.0	20.9
12	46.9	51.9	Iw"	80.7	66.0	71.0	99.4	6.0	0.0	-0.3	-0.3	2.4	-51.1	-3.4	-0.2	-15.7	3.7	8.7	0.0	3.7
7	59.3	63.3	Iw"	48.8	76.2	80.2	57.9	3.0	0.0	-0.3	-0.3	0.0	-48.4	-3.3	-0.1	-19.8	7.2	11.2	0.0	7.2
8	70.0	70.0	Iw	1.0	70.0	70.0	92.8	6.0	0.0	-0.3	-0.3	2.4	-50.3	-3.4	-0.2	0.0	24.2	24.2	0.0	24.2



Berechnung nach ISO 9613, Langzeit-Mittelung

Aufpunktbezeichnung : IPL Pl - GEB.: IPL  
 Lage des Aufpunktes : Xi= 1.0271 km Yi= 0.9229 km Zi= 354.97 m  
 Tag Nacht  
 Immission : 52.9 dB(A) 43.5 dB(A)

Emittrant Name	Emission		FQ	Anz./L/Fl	Lwges	Korr. Formel	min. ds	Dc	Di	mittlere Werte für		L AT		Zeitzuschläge		Im		
	Tag	Nacht								Dreifl	Activ	Aggr	Adm	Abcor	Tag	Nacht	Tag	Nacht
	dB(A)	dB(A)		/ m / qn	dB(A)	dB(A)	m	dB	dB	dB	dB	dB	dB	dB	dB	dB(A)	dB(A)	
9	70.0	70.0	Iw	0.0	70.0	70.0	94.6	3.0	0.0	-0.4	-0.4	2.4	-50.5	-3.6	-0.2	-0.5	20.2	20.2
2	47.0	0.0	Iw*	2.0	3405.8	82.3	164.5	3.0	0.0	-0.6	0.0	0.0	-56.6	-3.1	-0.4	-0.7	23.9	0.0
14	59.0	64.0	Iw*	2.0	399.9	85.0	87.1	3.0	0.0	-0.4	-0.4	2.4	-50.4	-3.6	-0.2	-0.9	34.9	39.9
6	56.0	0.0	Iw*	1.0	305.3	80.8	28.8	3.0	0.0	-0.4	0.0	1.8	-46.1	-3.3	-0.2	-8.8	26.8	0.0
4	63.0	64.0	Iw*	2.0	320.1	88.1	78.8	3.0	0.0	-0.3	-0.3	3.6	-50.3	-3.3	-0.2	-2.0	38.6	39.6
19	59.0	65.0	Iw*	2.0	63.0	76.0	141.3	3.0	0.0	-0.5	-0.5	2.7	-54.2	-3.9	-0.3	0.0	22.8	23.8
16	70.0	70.0	Iw	0.0	1.0	70.0	95.7	3.0	0.0	-0.4	-0.4	2.4	-50.6	-3.6	-0.2	-0.8	19.8	19.8
5	86.0	0.0	Iw	0.0	1.0	86.0	112.6	3.0	0.0	-0.5	0.0	2.3	-52.0	-3.8	-0.2	-8.5	26.3	0.0
13	49.5	53.5	Iw*	3.0	79.9	67.5	98.2	6.0	0.0	-0.3	-0.3	2.4	-50.8	-3.4	-0.2	-15.7	5.5	10.5
10	78.1	53.5	Iw*	3.0	80.8	97.2	72.6	6.0	0.0	-0.2	-0.2	2.3	-49.5	-3.1	-0.1	0.0	26.0	26.0
1	49.3	53.5	Iw*	2.0	3038.0	84.1	88.3	3.0	0.0	-0.2	-0.2	0.0	-47.1	-2.9	-0.1	-18.0	23.0	23.0
17	70.0	76.0	Iw	0.0	1.0	70.0	107.3	3.0	0.0	-0.4	-0.4	2.4	-51.6	-3.6	-0.2	-14.8	4.8	10.8
18	70.0	76.0	Iw	0.0	1.0	70.0	89.5	3.0	0.0	-0.3	-0.3	3.9	-50.0	-3.3	-0.1	0.0	23.2	29.2
3	60.0	0.0	Iw*	2.0	819.3	89.1	120.4	3.0	0.0	-0.5	0.0	2.0	-53.4	-3.8	-0.3	-3.4	32.7	0.0
11	46.9	51.9	Iw*	3.0	79.9	65.9	87.5	6.0	0.0	-0.2	-0.2	2.4	-49.8	-3.2	-0.2	0.0	20.9	25.9
12	46.9	51.9	Iw*	3.0	80.7	66.0	99.4	6.0	0.0	-0.3	-0.3	2.4	-51.1	-3.4	-0.2	-15.7	3.7	8.7
7	59.3	63.3	Iw*	1.0	48.8	76.2	80.2	3.0	0.0	-0.3	-0.3	0.0	-48.4	-3.3	-0.1	-19.8	7.2	11.2
8	70.0	70.0	Iw	0.0	1.0	70.0	92.8	6.0	0.0	-0.3	-0.3	2.4	-50.3	-3.4	-0.2	0.0	24.2	24.2

LIMA\_7 Version: 11.2\_1701101017 Lizenznehmer: Ing.-Büro Reinhold **Anlage 14**  
 Emission/Schallausbreitung/Immission, Beurteilungspegel Anlage,  
 Familienfeier mit Musikdarbietung, alle Türen Ostfassade tags auf,  
**alle Türen Ostfassade nachts zu**

Berechnung nach ISO 9613, Langzeit-Mittelung

Aufpunktbezeichnung : IE2 IE2  
 Lage des Aufpunktes : X1= 1.0331 km Y1= 0.9235 km Z1= 354.53 m  
 Immission : 50.7 dB(A) 45.0 dB(A)

Emittert Name	Ident		Emission		FQ	Anz./Fl / m <sup>2</sup> /qm	Lwyges		Korr. Formel	min. ds	Dc	DI	Cnet		mittlere Werte für		Agr	Astru	Abarc	L A1		Zeitzuschläge		Im			
	Tag	Nacht	Tag	Nacht			Tag	Nacht					Tag	Nacht	Drefl	Activ				Tag	Nacht	Tag	Nacht	Tag	Nacht	Tag	Nacht
9	70.0	70.0	Iw	Iw	0.0	1.0	70.0	70.0	0.0	98.2	3.0	0.0	-0.4	-0.4	0.0	-50.8	-3.7	-0.2	-0.6	17.3	17.3	0.0	0.0	0.0	0.0	17.3	17.3
2	47.0	0.0	Iw'	Iw'	2.0	3405.8	82.3	0.0	0.0	169.6	3.0	0.0	-0.6	-0.6	0.0	-56.8	-3.1	-0.4	-0.8	23.6	0.0	0.0	0.0	0.0	0.0	23.6	0.0
14	59.0	64.0	Iw'	Iw'	2.0	399.9	85.0	90.0	0.0	91.1	3.0	0.0	-0.4	-0.4	0.0	-50.5	-3.7	-0.2	-0.9	32.3	37.3	0.0	0.0	0.0	0.0	32.3	37.3
6	56.0	0.0	Iw'	Iw'	1.0	305.3	80.8	0.0	0.0	23.0	3.0	0.0	0.0	0.0	0.0	-46.1	-1.1	-0.1	0.0	36.5	0.0	0.0	0.0	0.0	0.0	36.5	0.0
4	63.0	64.0	Iw'	Iw'	2.0	320.1	88.1	89.1	0.0	81.8	3.0	0.0	-0.3	-0.3	1.9	-50.6	-3.4	-0.2	-2.0	36.5	37.5	0.0	0.0	0.0	0.0	36.5	37.5
19	58.0	65.0	Iw'	Iw'	2.0	63.0	76.0	83.0	0.0	138.3	3.0	0.0	-0.5	-0.5	0.7	-54.0	-3.9	-0.3	0.0	21.0	28.0	0.0	0.0	0.0	0.0	21.0	28.0
16	70.0	70.0	Iw	Iw	0.0	1.0	70.0	70.0	0.0	99.2	3.0	0.0	-0.4	-0.4	0.0	-50.9	-3.7	-0.2	-0.8	17.0	17.0	0.0	0.0	0.0	0.0	17.0	17.0
5	86.0	0.0	Iw	Iw	0.0	1.0	86.0	0.0	0.0	115.4	3.0	0.0	-0.5	-0.5	0.1	-52.2	-3.8	-0.2	-8.2	24.2	0.0	0.0	0.0	0.0	0.0	24.2	0.0
13	48.5	53.5	Iw'	Iw'	3.0	79.9	67.5	72.5	0.0	100.9	6.0	0.0	-0.3	-0.3	0.4	-51.1	-3.4	-0.2	-15.6	3.3	8.3	0.0	0.0	0.0	0.0	3.3	8.3
10	78.1	53.5	Iw'	Iw'	3.0	80.8	97.2	72.6	0.0	86.7	6.0	0.0	-0.2	-0.2	0.0	-49.8	-3.1	-0.2	0.0	49.9	25.3	0.0	0.0	0.0	0.0	49.9	25.3
1	49.3	53.5	Iw'	Iw'	2.0	3038.0	84.1	88.3	0.0	33.8	3.0	0.0	-0.1	-0.1	0.0	-46.4	-2.5	-0.1	0.0	38.0	42.2	0.0	0.0	0.0	0.0	38.0	42.2
17	70.0	76.0	Iw	Iw	0.0	1.0	70.0	76.0	0.0	110.3	3.0	0.0	-0.4	-0.4	0.4	-51.9	-3.6	-0.2	-14.9	2.4	8.4	0.0	0.0	0.0	0.0	2.4	8.4
18	70.0	76.0	Iw	Iw	0.0	1.0	70.0	76.0	0.0	91.8	3.0	0.0	-0.3	-0.3	2.5	-50.3	-3.3	-0.1	0.0	21.5	27.5	0.0	0.0	0.0	0.0	21.5	27.5
3	60.0	0.0	Iw'	Iw'	2.0	819.3	89.1	0.0	0.0	123.0	3.0	0.0	-0.5	-0.5	0.0	-53.6	-3.9	-0.3	-3.3	30.5	0.0	0.0	0.0	0.0	0.0	30.5	0.0
11	46.9	51.9	Iw'	Iw'	3.0	79.9	65.9	70.9	0.0	91.2	6.0	0.0	-0.2	-0.2	0.0	-50.2	-3.2	-0.2	0.0	18.1	23.1	0.0	0.0	0.0	0.0	18.1	23.1
12	46.9	51.9	Iw'	Iw'	3.0	80.7	66.0	71.0	0.0	102.6	6.0	0.0	-0.3	-0.3	0.1	-51.3	-3.5	-0.2	-15.6	1.1	6.1	0.0	0.0	0.0	0.0	1.1	6.1
7	59.3	63.3	Iw'	Iw'	1.0	48.8	76.2	80.2	0.0	52.4	3.0	0.0	-0.2	-0.2	0.0	-47.9	-3.1	-0.1	0.0	28.0	32.0	0.0	0.0	0.0	0.0	28.0	32.0
8	70.0	70.0	Iw	Iw	0.0	1.0	70.0	70.0	0.0	96.6	6.0	0.0	-0.3	-0.3	0.0	-50.7	-3.4	-0.3	0.0	21.3	21.3	0.0	0.0	0.0	0.0	21.3	21.3

Projekt:  
Riedpark

Auftrag:  
Im2008

Datum:  
09/04/2019

Berechnung nach ISO 9613, Langzeit-Mittelung

Aufpunktbezeichnung : I13 P3 - GEB.: I13

Lage des Aufpunktes : X1= 1.0563 km Y1= 0.9173 km Zi= 354,97 m

Tag : 41.2 dB(A) Nacht : 43.1 dB(A)

Immission : 41.2 dB(A) 43.1 dB(A)

Emitiert Name	Emission		FQ	Arz./L/Fl	Iw,ges Tag   Nacht	Korr. Formel	min. ds	Dc	DI	mittlere Werte für		Agr	Aerm	Abar	L <sub>NI</sub>		Zeitzuschläge		Im (L <sub>NI</sub> WZFH)	
	Tag	Nacht								Qref Tag   Nacht	Drefl Tag   Nacht				Adiv Tag   Nacht	dB	dB	dB	dB	dB
9	70.0	70.0	Iw	0.0	70.0	0.0	104.9	3.0	0.0	-0.5	-0.5	-3.8	-0.2	-18.7	-1.6	0.0	0.0	-1.6	-1.6	
2	47.0	0.0	Iw"	2.0	82.3	0.0	175.2	3.0	0.0	-0.6	0.0	-3.2	-0.4	-16.2	7.9	0.0	0.0	0.0	7.9	
14	59.0	64.0	Iw"	2.0	399.9	0.0	98.0	3.0	0.0	-0.5	-0.5	-3.8	-0.2	-18.4	14.0	0.0	0.0	0.0	14.0	
6	56.0	0.0	Iw"	1.0	305.3	0.0	22.7	3.0	0.0	0.0	0.0	-0.9	-0.1	-0.2	36.5	0.0	0.0	0.0	36.5	
4	63.0	64.0	Iw"	2.0	320.1	0.0	88.7	3.0	0.0	-0.4	-0.4	-3.5	-0.2	-19.8	18.9	0.0	0.0	0.0	18.9	
19	58.0	65.0	Iw"	2.0	63.0	0.0	142.8	3.0	0.0	-0.5	-0.5	-3.9	-0.3	0.0	20.7	0.0	0.0	0.0	20.7	
16	70.0	70.0	Iw	0.0	70.0	0.0	106.0	3.0	0.0	-0.5	-0.5	-3.8	-0.2	-18.6	-1.6	0.0	0.0	-1.6	-1.6	
5	86.0	0.0	Iw	0.0	86.0	0.0	122.3	3.0	0.0	-0.5	0.0	-3.8	-0.2	-20.5	11.3	0.0	0.0	0.0	11.3	
13	48.5	53.5	Iw"	3.0	79.9	0.0	107.8	6.0	0.0	-0.3	-0.3	-3.5	-0.2	-21.5	-3.7	0.0	0.0	-3.7	0.0	
10	78.1	53.5	Iw"	3.0	80.8	0.0	93.6	6.0	0.0	-0.3	-0.3	-3.3	-0.2	-18.8	30.2	0.0	0.0	0.0	30.2	
1	49.3	53.5	Iw"	2.0	3038.0	0.0	33.7	3.0	0.0	-0.1	-0.1	-2.5	-0.1	0.0	38.2	0.0	0.0	0.0	38.2	
17	70.0	76.0	Iw	0.0	70.0	0.0	117.2	3.0	0.0	-0.4	-0.4	-3.7	-0.2	-21.3	-5.0	0.0	0.0	-5.0	-5.0	
18	70.0	76.0	Iw	0.0	70.0	0.0	98.8	3.0	0.0	-0.3	-0.3	-3.4	-0.2	-18.4	7.5	0.0	0.0	0.0	7.5	
3	60.0	0.0	Iw"	2.0	819.3	0.0	130.0	3.0	0.0	-0.5	0.0	-3.9	-0.3	-19.7	13.6	0.0	0.0	0.0	13.6	
11	46.9	51.9	Iw"	3.0	79.9	0.0	96.1	6.0	0.0	-0.3	-0.3	-3.3	-0.2	-19.4	-2.1	0.0	0.0	-2.1	2.9	
12	46.9	51.9	Iw"	3.0	80.7	0.0	107.5	6.0	0.0	-0.4	-0.4	-3.6	-0.2	-21.4	-5.5	0.0	0.0	-5.5	-0.5	
7	59.3	63.3	Iw"	1.0	48.8	0.0	48.1	3.0	0.0	-0.1	-0.1	-2.9	-0.1	0.0	29.0	0.0	0.0	0.0	29.0	
8	70.0	70.0	Iw	0.0	70.0	0.0	103.2	6.0	0.0	-0.4	-0.4	-3.5	-0.2	-19.3	1.3	0.0	0.0	0.0	1.3	



Projekt:  
Blattipack

Auftrag  
1102003

Datum  
09/04/2019

Berechnung nach ISO 9613, Langzeit-Mittelung

Aufpunktbezeichnung : IP4 P4 ←

- GEB.: IP4

Lage des Aufpunktes : Xi= 0.903 km Yi= 1.0857 km Zi= 359.50 m

Tag

Nacht

Immission : 43.4 dB(A) 39.6 dB(A)

Emitteur Name	Emission		FQ	Anz./Lw/EI	Lw ges	Korr. Formel	min. ds	Dc	DI	Gret		mittlere Werte für		Astrn	Abar	L AT		Zeitschläge		Im		
	Tag	Nacht								Tag	Nacht	Drefl	Activ			Agri	Tag	Nacht	Tag	Nacht	Tag	Nacht
9	70.0	70.0	Iw	0.0	70.0	0.0	112.2	3.0	0.0	-0.8	-0.8	0.0	-52.0	-3.2	0.0	16.8	0.0	0.0	0.0	16.8	16.8	
2	47.0	0.0	Iw*	2.0	3405.8	0.0	33.0	3.0	0.0	-0.3	0.0	1.1	-48.1	-2.8	-1.5	33.6	0.0	0.0	0.0	33.6	0.0	
14	59.0	64.0	Iw*	2.0	399.9	0.0	109.2	3.0	0.0	-0.8	-0.8	0.0	-52.3	-3.3	-0.2	31.3	0.0	0.0	0.0	31.3	36.3	
6	56.0	0.0	Iw*	1.0	305.3	0.0	81.6	3.0	0.0	-0.8	-0.8	0.0	-54.4	-3.4	-0.2	25.0	0.0	0.0	0.0	25.0	0.0	
4	63.0	64.0	Iw*	2.0	320.1	0.0	101.1	3.0	0.0	-0.7	-0.7	1.6	-52.3	-3.2	-0.2	34.1	0.0	0.0	0.0	34.1	35.1	
19	58.0	65.0	Iw*	2.0	63.0	0.0	150.9	3.0	0.0	-0.8	-0.8	0.0	-56.8	-3.8	-0.4	17.0	0.0	0.0	0.0	17.0	24.0	
16	70.0	70.0	Iw	0.0	1.0	0.0	110.9	3.0	0.0	-0.8	-0.8	0.0	-51.9	-3.2	-0.2	16.9	0.0	0.0	0.0	16.9	16.9	
5	86.0	0.0	Iw	0.0	1.0	0.0	95.4	3.0	0.0	-0.7	0.0	0.0	-50.6	-3.1	-0.2	0.0	0.0	0.0	0.0	34.4	0.0	
13	48.5	53.5	Iw*	3.0	79.9	0.0	109.8	6.0	0.0	-0.7	-0.7	0.0	-51.8	-3.1	-0.1	0.0	0.0	0.0	0.0	17.8	22.8	
10	78.1	53.5	Iw*	3.0	80.8	0.0	121.5	6.0	0.0	-0.7	-0.7	0.0	-52.9	-3.3	-0.2	15.8	0.0	0.0	0.0	30.3	5.7	
1	49.3	53.5	Iw*	2.0	3038.0	0.0	218.1	3.0	0.0	-0.9	-0.9	0.0	-58.6	-4.1	-0.5	0.0	0.0	0.0	0.0	23.0	27.2	
17	70.0	76.0	Iw	0.0	1.0	0.0	99.7	3.0	0.0	-0.7	-0.7	0.0	-51.0	-3.0	-0.1	18.2	0.0	0.0	0.0	18.2	24.2	
18	70.0	76.0	Iw	0.0	1.0	0.0	120.0	3.0	0.0	-0.7	-0.7	0.0	-52.6	-3.3	-0.2	0.0	0.0	0.0	0.0	16.2	22.2	
3	60.0	0.0	Iw*	2.0	819.3	0.0	63.9	3.0	0.0	-0.6	0.0	0.0	-48.4	-2.6	-0.1	0.0	0.0	0.0	0.0	40.4	0.0	
11	46.9	51.9	Iw*	3.0	79.9	0.0	119.6	6.0	0.0	-0.7	-0.7	0.0	-52.6	-3.2	-0.2	-15.6	-0.4	0.0	0.0	0.0	-0.4	4.6
12	46.9	51.9	Iw*	3.0	80.7	0.0	105.5	6.0	0.0	-0.7	-0.7	0.0	-51.5	-3.1	-0.1	0.0	16.6	0.0	0.0	0.0	16.6	21.6
7	59.3	63.3	Iw*	1.0	48.8	0.0	253.3	3.0	0.0	-0.9	-0.9	0.0	-59.8	-4.2	-0.5	0.0	13.8	0.0	0.0	0.0	13.8	17.8
8	70.0	70.0	Iw	0.0	1.0	0.0	114.8	6.0	0.0	-0.7	-0.7	0.0	-52.2	-3.3	-0.2	-16.4	3.2	0.0	0.0	3.2	0.0	3.2

Projekt:  
Rietpark

Auftrag  
Im2003E

Datum  
09/04/2019

Berechnung nach ISO 9613, Langzeit-Mittelung

Aufpunktbezeichnung : IP5 B5 - GEB.: IP5 <D>

Lege des Aufpunktes : Xi= 0.9105 km Yi= 1.0752 km Zi= 355.06 m

Immission  
Tag : 44.8 dB(A) Nacht : 40.3 dB(A)

Emittent Name	Emission		FQ	Anz./V/Fl	Lw ges		Korr. Fornel	min. ds	Dc	DI	Gret		mittlere Werte für		Astm	Abar	L AT		Zeitschläge		Im	
	Tag	Nacht			Tag	Nacht					Tag	Nacht	Tag	Nacht			Tag	Nacht	Tag	Nacht	Tag	Nacht
1	70.0	70.0	0.0	1.0	70.0	70.0	0.0	97.7	3.0	0.0	-0.8	-0.8	0.0	-50.8	-3.6	0.0	17.6	17.6	0.0	0.0	17.6	17.6
2	47.0	0.0	2.0	3405.8	82.3	0.0	0.0	32.9	3.0	0.0	-0.3	0.0	0.0	-47.9	-2.5	-0.1	-1.4	33.1	0.0	0.0	0.0	33.1
14	59.0	64.0	2.0	399.9	85.0	0.0	0.0	94.4	3.0	0.0	-0.8	-0.8	0.0	-50.9	-3.7	-0.2	-0.9	36.5	0.0	0.0	0.0	31.5
6	56.0	0.0	1.0	305.3	80.8	0.0	0.0	67.0	3.0	0.0	-0.8	0.0	0.0	-53.2	-3.8	-0.2	0.0	25.8	0.0	0.0	0.0	25.8
4	63.0	64.0	2.0	320.1	88.1	0.0	0.0	86.3	3.0	0.0	-0.7	-0.7	1.6	-50.9	-3.6	-0.2	-2.1	35.2	0.0	0.0	0.0	35.2
19	58.0	65.0	2.0	63.0	76.0	83.0	0.0	179.0	3.0	0.0	-0.8	-0.8	0.0	-56.3	-4.2	-0.3	-0.1	17.4	24.4	0.0	0.0	17.4
16	70.0	70.0	0.0	1.0	70.0	70.0	0.0	96.4	3.0	0.0	-0.8	-0.8	0.0	-50.7	-3.6	-0.2	0.0	17.7	17.7	0.0	0.0	17.7
5	86.0	0.0	0.0	1.0	86.0	0.0	0.0	80.4	3.0	0.0	-0.7	0.0	0.0	-49.1	-3.4	-0.1	0.0	35.7	0.0	0.0	0.0	35.7
13	48.5	53.5	3.0	79.9	67.5	72.5	0.0	94.9	6.0	0.0	-0.6	-0.6	0.0	-50.5	-3.4	-0.2	0.0	18.8	23.8	0.0	0.0	18.8
10	78.1	53.5	3.0	80.8	97.2	72.6	0.0	106.7	6.0	0.0	-0.7	-0.7	0.0	-51.8	-3.6	-0.2	-15.7	31.3	6.7	0.0	0.0	31.3
1	49.3	53.5	2.0	3038.0	84.1	88.3	0.0	203.7	3.0	0.0	-0.9	-0.9	0.0	-58.1	-4.4	-0.4	0.0	23.3	27.5	0.0	0.0	23.3
17	70.0	76.0	0.0	1.0	70.0	76.0	0.0	94.9	3.0	0.0	-0.6	-0.6	0.0	-49.6	-3.3	-0.2	0.0	19.3	25.3	0.0	0.0	19.3
18	70.0	76.0	0.0	1.0	70.0	76.0	0.0	105.1	3.0	0.0	-0.7	-0.7	0.0	-51.4	-3.6	-0.2	0.0	17.1	23.1	0.0	0.0	17.1
3	60.0	0.0	2.0	819.3	89.1	0.0	0.0	49.3	3.0	0.0	-0.5	0.0	0.0	-46.4	-2.7	-0.1	0.0	42.4	0.0	0.0	0.0	42.4
11	46.9	51.9	3.0	79.9	65.9	70.9	0.0	105.0	6.0	0.0	-0.7	-0.7	0.0	-51.4	-3.5	-0.2	-15.5	0.6	5.6	0.0	0.0	0.6
12	46.9	51.9	3.0	80.7	66.0	71.0	0.0	90.8	6.0	0.0	-0.6	-0.6	0.0	-50.2	-3.3	-0.2	0.0	17.7	22.7	0.0	0.0	17.7
7	59.3	63.3	1.0	48.8	76.2	80.2	0.0	238.6	3.0	0.0	-0.9	-0.9	0.0	-59.3	-4.4	-0.5	0.0	14.1	18.1	0.0	0.0	14.1
8	70.0	70.0	0.0	1.0	70.0	70.0	0.0	100.2	6.0	0.0	-0.7	-0.7	0.0	-51.0	-3.6	-0.2	-16.3	4.2	4.2	0.0	0.0	4.2

Projekt:  
Riedpark

Auftrag  
insZingl

Datum  
09/04/2019

Berechnung nach ISO 9613, Langzeit-Mittelung



Aufpunktbezeichnung : IP6 P6 - GEB.: IP6  
Lage des Aufpunktes : XI= 0.9388 km Yi= 1.0726 km Zi= 351.47 m

Tag Nacht  
Immission : 46.1 dB(A) 41.9 dB(A)

Emitteur Name	Emission		FQ	Pw./L/EL	Iw,ges	Korr. Formel	min. ds	Dc	DI	mittlere Werte für		Agr	Aatm	Abar	L AIT		Zeitzuschläge		Im	
	Tag	Nacht								Grnet	Drrefl				Adiv	Tag	Nacht	Tag	Nacht	Tag
Zuluftöffnung	70.0	70.0	0.0	1.0	70.0	0.0	83.0	3.0	0.0	-0.8	0.0	-49.4	-4.3	-0.1	18.0	18.0	0.0	0.0	18.0	18.0
Baumhausbereich	47.0	0.0	2.0	3405.8	82.3	0.0	57.3	3.0	0.0	-0.5	0.0	-50.4	-2.3	-0.2	30.5	0.0	0.0	0.0	30.5	0.0
Dach	59.0	64.0	2.0	399.9	85.0	0.0	75.7	3.0	0.0	-0.8	0.0	-49.3	-4.3	-0.2	33.0	38.0	0.0	0.0	33.0	38.0
Park-TKW-Faden	56.0	0.0	1.0	305.3	80.8	0.0	43.1	3.0	0.0	-0.7	0.0	-50.5	-4.1	-0.2	28.2	0.0	0.0	0.0	28.2	0.0
Freiterrasse	63.0	64.0	2.0	320.1	88.1	0.0	68.6	3.0	0.0	-0.6	2.3	-49.3	-4.1	-0.1	37.2	38.2	0.0	0.0	37.2	38.2
Gallnütze	58.0	65.0	2.0	63.0	76.0	0.0	150.6	3.0	0.0	-0.8	0.0	-54.8	-4.4	-0.3	18.6	25.6	0.0	0.0	18.6	25.6
Kühlgelät	70.0	70.0	0.0	1.0	70.0	0.0	81.3	3.0	0.0	-0.6	0.0	-46.8	-3.9	-0.1	37.4	18.3	0.0	0.0	37.4	18.3
TKW-Faden	86.0	0.0	0.0	1.0	86.0	0.0	61.5	3.0	0.0	-0.5	0.0	-46.8	-3.9	-0.2	20.4	25.4	0.0	0.0	20.4	25.4
Nordfassade	48.5	53.5	3.0	79.9	67.5	0.0	75.8	6.0	0.0	-0.6	0.0	-46.6	-3.8	-0.2	28.6	4.0	0.0	0.0	28.6	4.0
Ostfassade	78.1	53.5	3.0	80.8	97.2	0.0	90.2	6.0	0.0	-0.6	0.0	-50.1	-4.0	-0.2	24.1	28.3	0.0	0.0	24.1	28.3
Parkplatz	49.3	53.5	2.0	3038.0	84.1	0.0	179.0	3.0	0.0	-0.9	0.0	-47.6	-4.6	-0.4	21.0	27.0	0.0	0.0	21.0	27.0
Rauchereisell	70.0	76.0	0.0	1.0	70.0	0.0	67.5	3.0	0.0	-0.5	0.0	-49.6	-4.0	-0.1	18.6	24.6	0.0	0.0	18.6	24.6
Parkereisell2	70.0	76.0	0.0	1.0	70.0	0.0	84.7	3.0	0.0	-0.4	0.0	-44.4	-3.3	-0.1	43.9	0.0	0.0	0.0	43.9	0.0
Spielplatz	60.0	0.0	2.0	819.3	89.1	0.0	40.1	3.0	0.0	-0.6	0.0	-50.0	-4.0	-0.2	-2.5	0.0	0.0	0.0	-2.5	0.0
Stofffassade	46.9	51.9	3.0	79.9	65.9	0.0	89.8	6.0	0.0	-0.6	0.0	-48.6	-3.8	-0.2	18.9	23.9	0.0	0.0	18.9	23.9
Westfassade	46.9	51.9	3.0	80.7	66.0	0.0	75.6	6.0	0.0	-0.5	0.0	-48.6	-3.8	-0.2	14.6	18.6	0.0	0.0	14.6	18.6
Zufahrt-Parkplatz	59.3	63.3	1.0	48.8	76.2	0.0	216.9	3.0	0.0	-0.9	0.0	-58.5	-4.7	-0.5	0.0	0.0	0.0	0.0	0.0	0.0
Zuluftöffnung	70.0	70.0	0.0	1.0	70.0	0.0	86.2	6.0	0.0	-0.7	0.0	-49.7	-4.1	-0.2	2.1	2.1	0.0	0.0	2.1	2.1



Projekt:  
Riedpark

Auftrag  
im2009

Datum  
09/04/2019

Berechnung nach ISO 9613, Langzeit-Mittelung



Aufpunktbezeichnung : IP7 P7  
Lage des Aufpunktes : XI= 0.9915 km Yi= 1.0683 km Zi= 351.46 m  
Tag Nacht  
Immission : 45.6 dB(A) 43.0 dB(A)

Mittelt Name	Emission		RQ	Anz./L/Fl	Iw,ges		Korr.		Dc	Dl	Cnet		mittlere Werte für		Agr	Aatm	Abar	L AIT		Zeitzuschläge		Im	
	Tag	Nacht			Tag	Nacht	dB(A)	dB(A)			dB	dB	Tag	Nacht				Tag	Nacht	Tag	Nacht	Tag	Nacht
9	70.0	70.0	0.0	1.0	70.0	70.0	0.0	0.0	79.3	3.0	-0.7	-0.7	0.0	-49.0	-4.3	-0.2	-0.5	18.3	18.3	0.0	0.0	18.3	18.3
2	47.0	0.0	2.0	3405.8	82.3	0.0	0.0	0.0	107.2	3.0	-0.7	0.0	0.0	-53.7	-2.7	-0.3	-1.1	26.7	0.0	0.0	0.0	26.7	0.0
14	59.0	64.0	2.0	399.9	85.0	90.0	0.0	0.0	68.7	3.0	-0.8	-0.8	0.0	-46.3	-4.3	-0.1	-0.5	34.0	39.0	0.0	0.0	34.0	39.0
6	56.0	0.0	1.0	305.3	80.8	0.0	0.0	0.0	29.5	3.0	-0.5	0.0	0.1	-46.3	-3.5	-0.1	0.0	33.5	0.0	0.0	0.0	33.5	0.0
4	63.0	64.0	2.0	320.1	88.1	89.1	0.0	0.0	60.9	3.0	-0.6	-0.6	1.3	-46.2	-4.0	-0.1	-1.4	38.1	39.1	0.0	0.0	38.1	39.1
19	56.0	65.0	2.0	63.0	76.0	83.0	0.0	0.0	97.8	3.0	-0.7	-0.7	0.0	-51.1	-4.2	-0.2	-0.2	22.6	29.6	0.0	0.0	22.6	29.6
16	70.0	70.0	0.0	1.0	70.0	70.0	0.0	0.0	77.2	3.0	-0.7	-0.7	0.0	-48.8	-4.3	-0.1	-0.5	18.6	18.6	0.0	0.0	18.6	18.6
5	86.0	0.0	0.0	1.0	86.0	0.0	0.0	0.0	56.1	3.0	-0.6	0.0	0.0	-46.0	-3.8	-0.1	0.0	38.5	0.0	0.0	0.0	38.5	0.0
13	48.5	53.5	3.0	79.9	67.5	72.5	0.0	0.0	63.2	6.0	-0.4	-0.4	0.0	-47.1	-3.6	-0.1	0.0	22.3	27.3	0.0	0.0	22.3	27.3
10	78.1	53.5	3.0	80.8	97.2	72.6	0.0	0.0	65.9	6.0	-0.5	-0.5	0.0	-48.5	-3.8	-0.1	-15.0	35.3	10.7	0.0	0.0	35.3	10.7
1	49.3	53.5	2.0	3038.0	84.1	88.3	0.0	0.0	137.6	3.0	-0.9	-0.9	0.0	-55.1	-4.6	-0.3	0.0	26.2	30.4	0.0	0.0	26.2	30.4
17	70.0	76.0	0.0	1.0	70.0	76.0	0.0	0.0	63.3	3.0	-0.5	-0.5	0.0	-47.0	-3.7	-0.2	0.0	21.6	27.6	0.0	0.0	21.6	27.6
18	70.0	76.0	0.0	1.0	70.0	76.0	0.0	0.0	66.1	3.0	-0.5	-0.5	0.0	-47.4	-3.8	-0.1	0.0	21.2	27.2	0.0	0.0	21.2	27.2
3	60.0	0.0	2.0	819.3	89.1	0.0	0.0	0.0	45.9	3.0	-0.5	0.0	0.0	-46.7	-3.7	-0.1	0.0	41.1	0.0	0.0	0.0	41.1	0.0
11	46.9	51.9	3.0	79.9	65.9	70.9	0.0	0.0	83.3	6.0	-0.6	-0.6	0.0	-49.4	-3.9	-0.2	-19.9	-2.1	2.9	0.0	0.0	-2.1	2.9
12	46.9	51.9	3.0	80.7	66.0	71.0	0.0	0.0	64.3	6.0	-0.5	-0.5	0.0	-48.3	-3.7	-0.1	-9.5	9.9	14.9	0.0	0.0	9.9	14.9
7	59.3	63.3	1.0	48.8	76.2	80.2	0.0	0.0	182.0	3.0	-0.9	-0.9	0.0	-57.1	-4.6	-0.4	0.0	16.2	20.2	0.0	0.0	16.2	20.2
8	70.0	70.0	0.0	1.0	70.0	70.0	0.0	0.0	83.3	6.0	-0.6	-0.6	0.0	-49.4	-4.1	-0.2	-20.5	1.2	1.2	0.0	0.0	1.2	1.2

Projekt:  
Rietpark

Auftrag  
indZEE

Datum  
09/04/2019

Berechnung nach ISO 9613, Langzeit-Mittelung

Aufpunktbezeichnung : IP8 R8 - GEB.: IP8

Lege des Aufpunktes : Xi= 1.0635 km Yi= 1.0574 km Zi= 351.43 m

Tag Nacht

Immission : 48.2 dB(A) 45.4 dB(A)

Emitrent Name	Emission		FQ	Anz./m <sup>2</sup> /EI	Lw <sub>ges</sub>	Korr.		Dc	DI	Qnet		mittlere Werte für		A <sub>adm</sub>	A <sub>bar</sub>	L <sub>RA</sub>		Zeitzuschläge		Im (L <sub>ATM</sub> REZARR) Tag   Nacht		
	Tag	Nacht				dB(A)	dB(A)			dB	dB	Tag	Nacht			dB(A)	dB(A)	Tag	Nacht		Tag	Nacht
9	70.0	70.0	Lw	1.0	70.0	0.0	0.0	117.8	3.0	-0.8	-0.8	0.0	-52.4	-4.5	-0.2	-0.3	14.8	14.8	0.0	0.0	14.8	14.8
2	47.0	0.0	Lw'	3405.8	82.3	0.0	0.0	177.9	3.0	-0.8	-0.8	0.0	-57.2	-3.3	-0.4	-0.8	22.8	0.0	0.0	0.0	22.8	0.0
14	59.0	64.0	Lw'	399.9	85.0	0.0	0.0	103.0	3.0	-0.8	-0.8	0.0	-51.7	-4.5	-0.2	-0.3	30.5	35.5	0.0	0.0	30.5	35.5
6	56.0	0.0	Lw'	305.3	80.8	0.0	0.0	34.1	3.0	-0.6	-0.6	0.0	-47.1	-3.8	-0.1	0.0	32.2	0.0	0.0	0.0	32.2	0.0
4	63.0	64.0	Lw'	320.1	88.1	0.0	0.0	96.0	3.0	-0.7	-0.7	0.0	-51.7	-4.3	-0.2	-1.9	34.0	35.0	0.0	0.0	34.0	35.0
19	70.0	65.0	Lw'	63.0	76.0	0.0	0.0	25.2	3.0	0.0	0.0	0.0	-39.8	-1.7	-0.1	-0.4	37.0	44.0	0.0	0.0	37.0	44.0
16	70.0	70.0	Lw	1.0	70.0	0.0	0.0	116.1	3.0	-0.8	-0.8	0.0	-52.3	-4.5	-0.2	-0.3	14.9	14.9	0.0	0.0	14.9	14.9
5	86.0	0.0	Lw	1.0	86.0	0.0	0.0	104.5	3.0	-0.8	-0.8	0.0	-51.4	-4.3	-0.2	0.0	34.5	0.0	0.0	0.0	34.5	0.0
13	48.5	53.5	Lw'	79.9	67.5	0.0	0.0	101.2	6.0	-0.6	-0.6	0.0	-51.1	-4.1	-0.2	0.0	17.5	22.5	0.0	0.0	17.5	22.5
10	78.1	53.5	Lw'	80.8	97.2	0.0	0.0	103.7	6.0	-0.7	-0.7	0.0	-51.3	-4.1	-0.2	0.0	46.9	22.3	0.0	0.0	46.9	22.3
1	49.3	53.5	Lw'	3038.0	84.1	0.0	0.0	89.3	3.0	-0.8	-0.8	0.0	-52.6	-4.5	-0.2	0.0	29.0	33.2	0.0	0.0	29.0	33.2
17	70.0	76.0	Lw	1.0	70.0	0.0	0.0	108.7	3.0	-0.7	-0.7	0.0	-51.7	-4.2	-0.3	0.0	16.1	22.1	0.0	0.0	16.1	22.1
18	70.0	76.0	Lw	1.0	70.0	0.0	0.0	94.9	3.0	-0.7	-0.7	0.0	-50.5	-4.1	-0.2	0.0	17.5	23.5	0.0	0.0	17.5	23.5
3	60.0	0.0	Lw'	819.3	89.1	0.0	0.0	101.2	3.0	-0.7	-0.7	0.0	-52.8	-4.3	-0.2	0.0	34.1	0.0	0.0	0.0	34.1	0.0
11	46.9	51.9	Lw'	79.9	65.9	0.0	0.0	115.9	6.0	-0.7	-0.7	0.0	-52.4	-4.2	-0.2	-19.3	-4.9	0.1	0.0	0.0	-4.9	0.1
12	46.9	51.9	Lw'	80.7	66.0	0.0	0.0	115.7	6.0	-0.7	-0.7	0.0	-52.3	-4.2	-0.2	-19.2	-4.6	0.4	0.0	0.0	-4.6	0.4
7	59.3	63.3	Lw'	48.8	76.2	0.0	0.0	147.4	3.0	-0.9	-0.9	0.0	-55.3	-4.6	-0.3	0.0	18.1	22.1	0.0	0.0	18.1	22.1
8	70.0	70.0	Lw	1.0	70.0	0.0	0.0	120.9	6.0	-0.8	-0.8	0.0	-52.7	-4.3	-0.2	-20.2	-2.2	0.0	0.0	0.0	-2.2	-2.2

Projekt:  
Rietipack

Auftrag  
Imz2008

Datum  
09/04/2019

Berechnung nach ISO 9613, Langzeit-Mittelung

Aufpunktbezeichnung : IP9 P9 - GEB.: IP9

Lage des Aufpunktes : Xi= 1.1166 km Yi= 1.0552 km Zi= 351.43 m

Tag : 45.2 dB(A) Nacht : 45.8 dB(A)

Immission : 45.2 dB(A) 45.8 dB(A)

Emitteur Name	Emission		FQ	Arz./L/EL	Iwges	Korr.		min.	Dc	Df	Cnet		mittlere Werte für		Agr	Astrn	Abar	L AI		Zeitzuschläge		Im		
	Tag	Nacht				dB(A)	dB(A)				dB	m	dB	dB				Tag	Nacht	Drefl	Activ	Tag	Nacht	dB
Zuluftöffnung	70.0	70.0	Iw	0.0	70.0	70.0	0.0	164.1	3.0	0.0	-0.9	-0.9	0.0	-55.3	-4.6	-0.3	-0.2	11.7	11.7	0.0	0.0	0.0	11.7	11.7
Barthausbereich	47.0	0.0	Iw'	2.0	82.3	0.0	0.0	230.5	3.0	0.0	-0.9	0.0	0.0	-59.0	-3.6	-0.5	-0.7	20.6	0.0	0.0	0.0	0.0	20.6	0.0
Dach	59.0	64.0	Iw'	2.0	85.0	90.0	0.0	148.4	3.0	0.0	-0.9	-0.9	0.0	-54.7	-4.6	-0.3	-0.2	27.3	32.3	0.0	0.0	0.0	27.3	32.3
Fahrt-IMV-Laden	56.0	0.0	Iw'	1.0	80.8	0.0	0.0	63.6	3.0	0.0	-0.8	0.0	0.0	-51.1	-4.3	-0.2	0.0	27.4	0.0	0.0	0.0	0.0	27.4	0.0
Freiterrasse	63.0	64.0	Iw'	2.0	88.1	89.1	0.0	142.1	3.0	0.0	-0.8	-0.8	2.4	-54.8	-4.5	-0.3	-2.0	31.1	32.1	0.0	0.0	0.0	31.1	32.1
Garllöhle	59.0	65.0	Iw'	2.0	76.0	83.0	0.0	23.6	3.0	0.0	0.0	0.0	0.0	-39.4	-1.5	0.0	0.0	38.1	45.1	0.0	0.0	0.0	38.1	45.1
Kühlgeläc	70.0	70.0	Iw	0.0	70.0	70.0	0.0	162.7	3.0	0.0	-0.9	-0.9	0.0	-55.2	-4.6	-0.3	-0.2	11.8	11.8	0.0	0.0	0.0	11.8	11.8
IMV-Laden	86.0	0.0	Iw	0.0	86.0	0.0	0.0	154.4	3.0	0.0	-0.8	0.0	0.0	-54.8	-4.5	-0.3	0.0	28.6	0.0	0.0	0.0	0.0	28.6	0.0
Nordfassade	48.5	53.5	Iw'	3.0	67.5	72.5	0.0	148.8	6.0	0.0	-0.8	-0.8	0.0	-54.5	-4.3	-0.2	0.0	13.7	18.7	0.0	0.0	0.0	13.7	18.7
Ostfassade	78.1	53.5	Iw'	3.0	80.8	97.2	0.0	148.1	6.0	0.0	-0.8	-0.8	0.0	-54.4	-4.4	-0.2	0.0	43.4	18.8	0.0	0.0	0.0	43.4	18.8
Parkplatz	49.3	53.5	Iw'	2.0	84.1	88.3	0.0	84.9	3.0	0.0	-0.8	-0.8	0.0	-52.3	-4.5	-0.2	0.0	29.3	33.5	0.0	0.0	0.0	29.3	33.5
Recheninsel1	70.0	76.0	Iw	0.0	70.0	76.0	0.0	157.7	3.0	0.0	-0.8	-0.8	0.0	-55.0	-4.4	-0.2	0.0	12.5	18.5	0.0	0.0	0.0	12.5	18.5
Recheninsel2	70.0	76.0	Iw	0.0	70.0	76.0	0.0	140.7	3.0	0.0	-0.8	-0.8	0.0	-54.0	-4.4	-0.2	0.0	13.6	19.6	0.0	0.0	0.0	13.6	19.6
Spielplatz	60.0	0.0	Iw'	2.0	819.3	89.1	0.0	152.4	3.0	0.0	-0.8	-0.8	0.0	-55.8	-4.5	-0.3	0.0	30.7	0.0	0.0	0.0	0.0	30.7	0.0
Südfassade	46.9	51.9	Iw'	3.0	65.9	70.9	0.0	162.7	6.0	0.0	-0.8	-0.8	0.0	-55.2	-4.4	-0.3	-19.0	-7.8	-2.8	0.0	0.0	0.0	-7.8	-2.8
Westfassade	46.9	51.9	Iw'	3.0	80.7	66.0	0.0	163.1	6.0	0.0	-0.8	-0.8	0.0	-55.3	-4.4	-0.3	-19.0	-7.8	-2.8	0.0	0.0	0.0	-7.8	-2.8
Zufahrt-Parkplatz	59.3	63.3	Iw'	1.0	48.8	76.2	0.0	147.5	3.0	0.0	-0.9	-0.9	0.0	-55.0	-4.6	-0.3	0.0	18.4	22.4	0.0	0.0	0.0	18.4	22.4
Zuluftöffnung	70.0	70.0	Iw	0.0	70.0	70.0	0.0	166.8	6.0	0.0	-0.8	-0.8	0.0	-55.4	-4.5	-0.3	-20.0	-5.0	-5.0	0.0	0.0	0.0	-5.0	-5.0



Projekt:  
Rietzpark

Auftrag:  
Inz0202

Datum:  
09/04/2019

Berechnung nach ISO 9613, Langzeit-Mittelung

Aufpunktbezeichnung : IP10 P10 - GEB.: IP10

Legende des Aufpunktes : Xi= 0.9609 km Yi= 0.9228 km Zi= 356.84 m

Inmission : 52.2 dB(A) 43.4 dB(A)

			Emission			R2	Anz./L/Fl	Lwges	Korr.	min.	Dc	DI	Cnet		Drefl		mittlere Werte für		Agr	Aadm	Abar	L AIT		Zeitzuschläge		Im	
			Tag	Nacht									Tag	Nacht	Tag	Nacht	Tag	Nacht				Tag	Nacht	Tag	Nacht		Tag
			dB(A)	dB(A)			/ m / qn	dB(A)	dB	m	dB	dB	dB	dB	dB	dB	dB	dB	dB	dB	dB	dB(A)	dB	dB	dB(A)	dB(A)	
			70.0	70.0			1.0	70.0	0.0	72.9	3.0	0.0	-0.7	-0.7	0.0	-48.3	-2.8	-0.1	0.0	0.0	0.0	21.1	21.1	0.0	0.0	21.1	21.1
			47.0	0.0			3405.8	82.3	0.0	124.6	3.0	0.0	-0.8	-0.8	0.0	-54.5	-3.4	-0.3	-0.7	-0.7	0.0	25.6	25.6	0.0	0.0	25.6	0.0
			59.0	64.0			399.9	85.0	0.0	70.6	3.0	0.0	-0.8	-0.8	0.0	-48.4	-2.9	-0.1	-1.2	-1.2	0.0	34.6	34.6	0.0	0.0	34.6	39.6
			56.0	0.0			305.3	80.8	0.0	74.0	3.0	0.0	-0.8	-0.8	0.0	-51.4	-3.7	-0.2	-1.8	-1.8	0.0	25.9	25.9	0.0	0.0	25.9	0.0
			63.0	64.0			320.1	88.1	0.0	61.9	3.0	0.0	-0.6	-0.6	1.3	-48.6	-3.0	-0.1	-1.9	-1.9	0.0	38.2	38.2	0.0	0.0	38.2	39.2
			58.0	65.0			63.0	76.0	0.0	166.5	3.0	0.0	-0.8	-0.8	0.0	-55.6	-4.0	-0.3	0.0	0.0	0.0	18.3	18.3	0.0	0.0	18.3	23.3
			70.0	70.0			1.0	70.0	0.0	74.7	3.0	0.0	-0.7	-0.7	0.0	-48.5	-2.8	-0.1	-0.4	-0.4	0.0	20.5	20.5	0.0	0.0	20.5	20.5
			86.0	0.0			1.0	86.0	0.0	96.3	3.0	0.0	-0.6	-0.6	0.0	-50.7	-3.5	-0.2	-10.0	-10.0	0.0	23.9	23.9	0.0	0.0	23.9	0.0
			48.5	53.5			79.9	67.5	0.0	82.0	6.0	0.0	-0.5	-0.5	0.0	-49.4	-3.0	-0.2	-16.0	-16.0	4.2	9.2	9.2	0.0	0.0	9.2	9.2
			78.1	53.5			80.8	97.2	0.0	70.8	6.0	0.0	-0.5	-0.5	0.0	-48.0	-2.7	-0.2	0.0	0.0	51.8	27.2	27.2	0.0	0.0	51.8	27.2
			49.3	53.5			3038.0	84.1	0.0	86.1	3.0	0.0	-0.8	-0.8	0.0	-52.0	-3.8	-0.2	-1.5	-1.5	28.8	33.0	33.0	0.0	0.0	28.8	33.0
			70.0	76.0			1.0	70.0	0.0	89.3	3.0	0.0	-0.6	-0.6	0.0	-50.0	-3.3	-0.1	-4.3	-4.3	4.6	10.6	10.6	0.0	0.0	10.6	10.6
			60.0	0.0			819.3	89.1	0.0	99.3	3.0	0.0	-0.7	-0.7	0.0	-51.9	-3.6	-0.2	-0.9	-0.9	35.5	20.2	20.2	0.0	0.0	35.5	26.2
			46.9	51.9			79.9	65.9	0.0	66.3	6.0	0.0	-0.5	-0.5	0.4	-47.4	-2.7	-0.1	0.0	0.0	21.6	26.6	26.6	0.0	0.0	21.6	26.6
			46.9	51.9			80.7	66.0	0.0	80.3	6.0	0.0	-0.6	-0.6	0.4	-49.1	-3.0	-0.2	-15.8	-15.8	3.7	8.7	8.7	0.0	0.0	8.7	8.7
			59.3	63.3			48.8	76.2	0.0	103.7	3.0	0.0	-0.9	-0.9	0.0	-52.6	-4.1	-0.2	-6.8	-6.8	14.6	18.6	18.6	0.0	0.0	14.6	18.6
			70.0	70.0			1.0	70.0	0.0	69.7	6.0	0.0	-0.6	-0.6	1.0	-47.9	-3.0	-0.1	0.0	0.0	25.4	25.4	0.0	0.0	25.4	25.4	

Projekt:  
Riedpark

Auftrag:  
IRD2002

Datum:  
09/04/2019

Berechnung nach ISO 9613, Langzeit-Mittelung



Aufpunktbezeichnung : IPEL P11 - GEB.: IPEL  
 Lage des Aufpunktes : XI= 0.9462 km YI= 0.9327 km Zi= 357.98 m

Tag : 45.3 dB(A) Nacht : 44.2 dB(A)  
 Immission : 45.3 dB(A) 44.2 dB(A)

Emitter Name	Ident		Emission		FQ	Anz./L/Fl	Iw, ges	Korr. Formel	min. ds	Dc	DII	Qret		mittlere Werte für		Agr	Astrm	Pcor	L, RT		Zeiterschläge		Im		
	Tag	Nacht	Tag	Nacht								Tag	Nacht	Drefl	Activ				Tag	Nacht	Tag	Nacht	Tag	Nacht	Tag
Abluftöffnung	9	70.0	Iw	0.0	1.0	70.0	70.0	0.0	63.3	3.0	0.0	-0.7	-0.7	0.0	-47.0	-2.3	-0.2	0.0	22.8	22.8	0.0	0.0	22.8	22.8	
Baumhausbereich	2	47.0	Iw	2.0	3405.8	82.3	0.0	0.0	91.9	3.0	0.0	-0.7	0.0	0.0	-52.6	-3.3	-0.2	-0.8	0.0	27.7	0.0	0.0	0.0	27.7	0.0
Deck	14	59.0	Iw	2.0	399.9	85.0	90.0	0.0	64.0	3.0	0.0	-0.7	-0.7	0.0	-47.8	-2.6	-0.1	-0.7	36.1	41.1	0.0	0.0	36.1	41.1	
Haut-IW-Laden	6	56.0	Iw	1.0	305.3	80.8	0.0	0.0	90.9	3.0	0.0	-0.8	0.0	0.0	-52.9	-3.9	-0.2	-1.4	24.6	0.0	0.0	0.0	24.6	0.0	
Freizeitanlage	4	63.0	Iw	2.0	320.1	88.1	89.1	0.0	57.0	3.0	0.0	-0.6	-0.6	0.0	-47.9	-3.0	-0.1	-1.5	39.1	40.1	0.0	0.0	39.1	40.1	
Cellularte	19	58.0	Iw	2.0	63.0	76.0	83.0	0.0	182.7	3.0	0.0	-0.8	-0.8	0.0	-56.3	-4.0	-0.4	0.0	17.5	24.5	0.0	0.0	17.5	24.5	
Kühlgart	16	70.0	Iw	0.0	1.0	70.0	70.0	0.0	65.4	3.0	0.0	-0.7	-0.7	0.0	-47.3	-2.4	-0.2	0.0	22.4	22.4	0.0	0.0	22.4	22.4	
IW-Laden	5	86.0	Iw	0.0	1.0	86.0	0.0	0.0	87.5	3.0	0.0	-0.7	0.0	0.0	-49.8	-3.4	-0.2	-6.9	28.0	0.0	0.0	0.0	28.0	0.0	
Nordfassade	13	48.5	Iw	3.0	79.9	67.5	72.5	0.0	79.3	6.0	0.0	-0.6	-0.6	0.0	-48.9	-3.0	-0.2	-16.0	4.8	9.8	0.0	0.0	4.8	9.8	
Ostfassade	10	78.1	Iw	3.0	80.8	97.2	72.6	0.0	60.2	6.0	0.0	-0.4	-0.4	0.0	-47.9	-2.7	-0.1	-10.9	41.2	16.6	0.0	0.0	41.2	16.6	
Parkplatz	1	49.3	Iw	2.0	3038.0	84.1	88.3	0.0	123.7	3.0	0.0	-0.9	-0.9	0.0	-54.0	-4.1	-0.3	-0.3	27.5	31.7	0.0	0.0	27.5	31.7	
Rauchdiesel1	17	70.0	Iw	0.0	1.0	70.0	76.0	0.0	80.0	3.0	0.0	-0.6	-0.6	0.0	-49.1	-3.1	-0.2	-10.0	10.0	16.0	0.0	0.0	10.0	16.0	
Rauchdiesel2	18	70.0	Iw	0.0	1.0	70.0	76.0	0.0	79.6	3.0	0.0	-0.6	-0.6	0.0	-49.0	-3.0	-0.2	-10.1	10.1	16.1	0.0	0.0	10.1	16.1	
Spielplatz	3	60.0	Iw	2.0	819.3	89.1	0.0	0.0	84.3	3.0	0.0	-0.7	0.0	0.0	-50.4	-3.5	-0.2	-0.1	37.2	0.0	0.0	0.0	37.2	0.0	
Stofftasche	11	46.9	Iw	3.0	79.9	65.9	70.9	0.0	59.2	6.0	0.0	-0.4	-0.4	0.0	-46.4	-2.6	-0.1	0.0	22.4	27.4	0.0	0.0	22.4	27.4	
Westfassade	12	46.9	Iw	3.0	80.7	66.0	71.0	0.0	60.5	6.0	0.0	-0.4	-0.4	0.0	-47.9	-2.9	-0.1	-12.0	8.7	13.7	0.0	0.0	8.7	13.7	
Zufahrt-Parkplatz	7	59.3	Iw	1.0	48.8	76.2	80.2	0.0	137.0	3.0	0.0	-0.9	-0.9	0.0	-54.8	-4.3	-0.3	-3.9	15.0	19.0	0.0	0.0	15.0	19.0	
Zufahrtöffnung	8	70.0	Iw	0.0	1.0	70.0	70.0	0.0	59.5	6.0	0.0	-0.5	-0.5	0.0	-46.5	-2.9	-0.1	0.0	26.0	26.0	0.0	0.0	26.0	26.0	

Berechnung nach ISO 9613, Langzeit-Mittelung



Aufpunktbezeichnung : IP12 P12 - GSB.: IP12  
 Lage des Aufpunktes : Xi= 0.8630 km Yi= 1.0092 km Zi= 372.14 m  
 Tag Nacht  
 Immission : 51.8 dB(A) 40.9 dB(A)

Emitter-Name	Emission		FQ	Anz./L/Fl	Iw/ges	Korr. Formel	min. ds	Dc	DI	mittlere Werte für		Agr	Ae(tm)	Ae(ar)	L A(T)		Zeitzuschläge		Im		
	Tag	Nacht								Qnet	Drefl				Ae(iv)	Tag	Nacht	Tag	Nacht	Tag	Nacht
Abluftöffnung	70.0	70.0	Iw	1.0	70.0	0.0	104.0	3.0	0.0	-0.7	-0.7	-2.0	-0.3	0.0	18.7	18.7	0.0	0.0	0.0	18.7	18.7
Bauhausbereich	47.0	0.0	Iw*	3405.8	82.3	0.0	3.8	2.31	0.0	0.0	-0.1	0.0	0.0	0.0	51.2	0.0	0.0	0.0	0.0	51.2	0.0
Dach	59.0	64.0	Iw*	398.9	85.0	0.0	106.4	3.0	0.0	-0.7	-2.2	-2.0	-0.2	0.0	33.0	38.0	0.0	0.0	0.0	33.0	38.0
Einort-IKW-Laden	56.0	0.0	Iw*	305.3	80.8	0.0	111.3	3.0	0.0	-0.8	-3.0	-3.0	-0.3	0.0	24.0	0.0	0.0	0.0	0.0	24.0	0.0
Freitreppe	63.0	64.0	Iw*	320.1	88.1	0.0	98.8	3.0	0.0	-0.6	-2.5	-2.5	-0.2	-2.0	35.1	36.1	0.0	0.0	0.0	35.1	36.1
Gaillrute	58.0	65.0	Iw*	63.0	76.0	0.0	229.5	3.0	0.0	-0.8	-3.3	-3.3	-0.4	0.0	16.1	23.1	0.0	0.0	0.0	16.1	23.1
Kühlergerät	70.0	70.0	Iw	1.0	70.0	0.0	104.3	3.0	0.0	-0.7	-0.7	-2.4	-0.2	0.0	18.7	18.7	0.0	0.0	0.0	18.7	18.7
IKW-Laden	86.0	0.0	Iw	1.0	86.0	0.0	106.3	3.0	0.0	-0.6	-2.4	-2.4	-0.2	0.0	34.2	0.0	0.0	0.0	0.0	34.2	0.0
Nordfassade	46.5	53.5	Iw*	79.9	67.5	0.0	113.1	6.0	0.0	-0.6	-2.3	-2.3	-0.2	-15.8	2.4	7.4	0.0	0.0	0.0	2.4	7.4
Ostfassade	78.1	53.5	Iw*	80.8	97.2	0.0	119.9	6.0	0.0	-0.6	-2.5	-2.5	-0.2	-16.1	31.1	6.5	0.0	0.0	0.0	31.1	6.5
Parkplatz	49.3	53.5	Iw*	3038.0	84.1	0.0	217.1	3.0	0.0	-0.9	-3.5	-3.5	-0.5	0.0	23.7	27.9	0.0	0.0	0.0	23.7	27.9
Baucheneinzel1	70.0	76.0	Iw	1.0	70.0	0.0	104.4	3.0	0.0	-0.6	-2.3	-2.3	-0.2	0.0	21.0	27.0	0.0	0.0	0.0	21.0	27.0
Baucheneinzel2	70.0	76.0	Iw	1.0	70.0	0.0	125.1	3.0	0.0	-0.7	-0.7	-2.5	-0.2	-15.5	1.2	7.2	0.0	0.0	0.0	1.2	7.2
Spiegelplatz	60.0	0.0	Iw*	819.3	89.1	0.0	71.8	3.0	0.0	-0.5	-2.3	-2.3	-0.2	0.0	39.7	0.0	0.0	0.0	0.0	39.7	0.0
Südfassade	46.9	51.9	Iw*	79.9	65.9	0.0	109.5	6.0	0.0	-0.6	-2.4	-2.4	-0.2	0.0	16.9	21.9	0.0	0.0	0.0	16.9	21.9
Westfassade	46.9	51.9	Iw*	80.7	66.0	0.0	101.9	6.0	0.0	-0.5	-2.3	-2.3	-0.2	0.0	17.8	22.8	0.0	0.0	0.0	17.8	22.8
Zufahrt-Parkplatz	59.3	63.3	Iw*	48.8	76.2	0.0	242.5	3.0	0.0	-0.9	-3.6	-3.6	-0.5	0.0	14.8	18.8	0.0	0.0	0.0	14.8	18.8
Zuluftöffnung	70.0	70.0	Iw	1.0	70.0	0.0	104.0	6.0	0.0	-0.6	-2.5	-2.5	-0.2	0.0	21.4	21.4	0.0	0.0	0.0	21.4	21.4



Aufpunkt: Gebäude	Nr.	Bezeichnung	Höhe	Emittent Name	Ident	Emiss. (Lm, E)		RQ	sm	Direktanteil		Reflexion		Pegel		
						Tag	Nacht			Amp	Tag	Nacht	Tag	Nacht	Tag	Nacht
			m	S T R A S S E		dB(A)	dB(A)	m	m	dB(A)	dB(A)	dB(A)	dB(A)	dB(A)	dB(A)	
IP1	IP1	P1	354.97	strA	-	36.0	29.5	14.0	25.45	0.0	24.1	17.6	0.0	0.0	24.1	17.6
				strB	-	42.5	37.3	14.0	54.54	0.0	11.7	6.5	0.0	0.0	11.7	6.5
											24.4	17.9	0.0	0.0	24.4	17.9
IP2	IP2	P2	354.93	strA	-	36.0	29.5	14.0	19.55	0.0	35.3	28.8	0.0	0.0	35.3	28.8
				strB	-	42.5	37.3	14.0	49.00	0.0	31.3	26.1	0.0	0.0	31.3	26.1
											36.8	30.7	0.0	0.0	36.8	30.7
IP3	IP3	P3	354.97	strA	-	36.0	29.5	14.0	19.56	0.0	35.2	28.7	0.0	0.0	35.2	28.7
				strB	-	42.5	37.3	14.0	44.29	0.0	32.7	27.5	0.0	0.0	32.7	27.5
											37.1	31.1	0.0	0.0	37.1	31.1
IP4	IP4	P4	359.50	strA	-	36.0	29.5	14.0	22.60	0.0	33.0	26.5	0.0	0.0	33.0	26.5
				strB	-	42.5	37.3	14.0	251.76	0.0	21.0	15.8	0.0	0.0	21.0	15.8
											33.3	26.9	0.0	0.0	33.3	26.9
IP5	IP5	P5	355.06	strA	-	36.0	29.5	14.0	19.67	0.0	35.7	29.2	0.0	0.0	35.7	29.2
				strB	-	42.5	37.3	14.0	237.12	0.0	21.3	16.1	0.0	0.0	21.3	16.1
											35.9	29.4	0.0	0.0	35.9	29.4
IP6	IP6	P6	351.47	strA	-	36.0	29.5	14.0	26.16	0.0	34.1	27.6	0.0	0.0	34.1	27.6
				strB	-	42.5	37.3	14.0	215.58	0.0	21.9	16.7	0.0	0.0	21.9	16.7
											34.3	27.9	0.0	0.0	34.3	27.9
IP7	IP7	P7	351.46	strA	-	36.0	29.5	14.0	27.68	0.0	33.2	26.7	0.0	0.0	33.2	26.7
				strB	-	42.5	37.3	14.0	181.05	0.0	23.2	18.0	0.0	0.0	23.2	18.0
											33.6	27.2	0.0	0.0	33.6	27.2

Aufpunkt Gebäude	Nr.	Bezeichnung	Höhe	Emittent		Ident	Emiss. (Lm.E)		RQ	sm	K		Direktanteil		Reflexion		Pegel	
				m	STRASSE		Tag	Nacht			Tag	Nacht	Tag	Nacht	Tag	Nacht	Tag	Nacht
							dB(A)	dB(A)	m	dB	dB(A)	dB(A)	dB(A)	dB(A)	dB(A)	dB(A)	dB(A)	dB(A)
IP8			351.43	strA	-	36.0	29.5	14.0	31.32	0.0	31.7	25.2	0.0	0.0	31.7	25.2		
				strB	-	42.5	37.3	14.0	147.12	0.0	25.1	19.9	0.0	0.0	25.1	19.9		
											32.6	26.4	0.0	0.0	32.6	26.4		
IP9			351.43	strA	-	36.0	29.5	14.0	61.37	0.0	26.8	20.3	0.0	0.0	26.8	20.3		
				strB	-	42.5	37.3	14.0	147.89	0.0	25.9	20.7	0.0	0.0	25.9	20.7		
											29.4	23.5	0.0	0.0	29.4	23.5		
IP10			356.84	strA	-	36.0	29.5	14.0	70.61	0.0	25.9	19.4	0.0	0.0	25.9	19.4		
				strB	-	42.5	37.3	14.0	99.83	0.0	25.0	19.8	0.0	0.0	25.0	19.8		
											28.5	22.6	0.0	0.0	28.5	22.6		
IP11			357.98	strA	-	36.0	29.5	14.0	102.73	0.0	25.3	18.8	0.0	0.0	25.3	18.8		
				strB	-	42.5	37.3	14.0	133.71	0.0	22.4	17.2	0.0	0.0	22.4	17.2		
											27.1	21.1	0.0	0.0	27.1	21.1		
IP12			372.14	strA	-	36.0	29.5	14.0	57.92	0.0	27.4	20.9	0.0	0.0	27.4	20.9		
				strB	-	42.5	37.3	14.0	238.97	0.0	21.8	16.6	0.0	0.0	21.8	16.6		
											28.4	22.2	0.0	0.0	28.4	22.2		
IP13			354.12	strA	-	36.0	29.5	14.0	310.95	0.0	12.7	6.2	0.0	0.0	12.7	6.2		
				strB	-	42.5	37.3	14.0	23.22	0.0	42.2	37.0	0.0	0.0	42.2	37.0		
											42.2	37.0	0.0	0.0	42.2	37.0		

	Dr. Blechschmidt & Reinhold GmbH	M 1: 2390	Bebauungsplan Nr. 27 -Riethpark-, Dingelstädt	3D-Darstellung digitales Modell	ANLAGE 16
--	----------------------------------	-----------	--	---------------------------------	-----------

